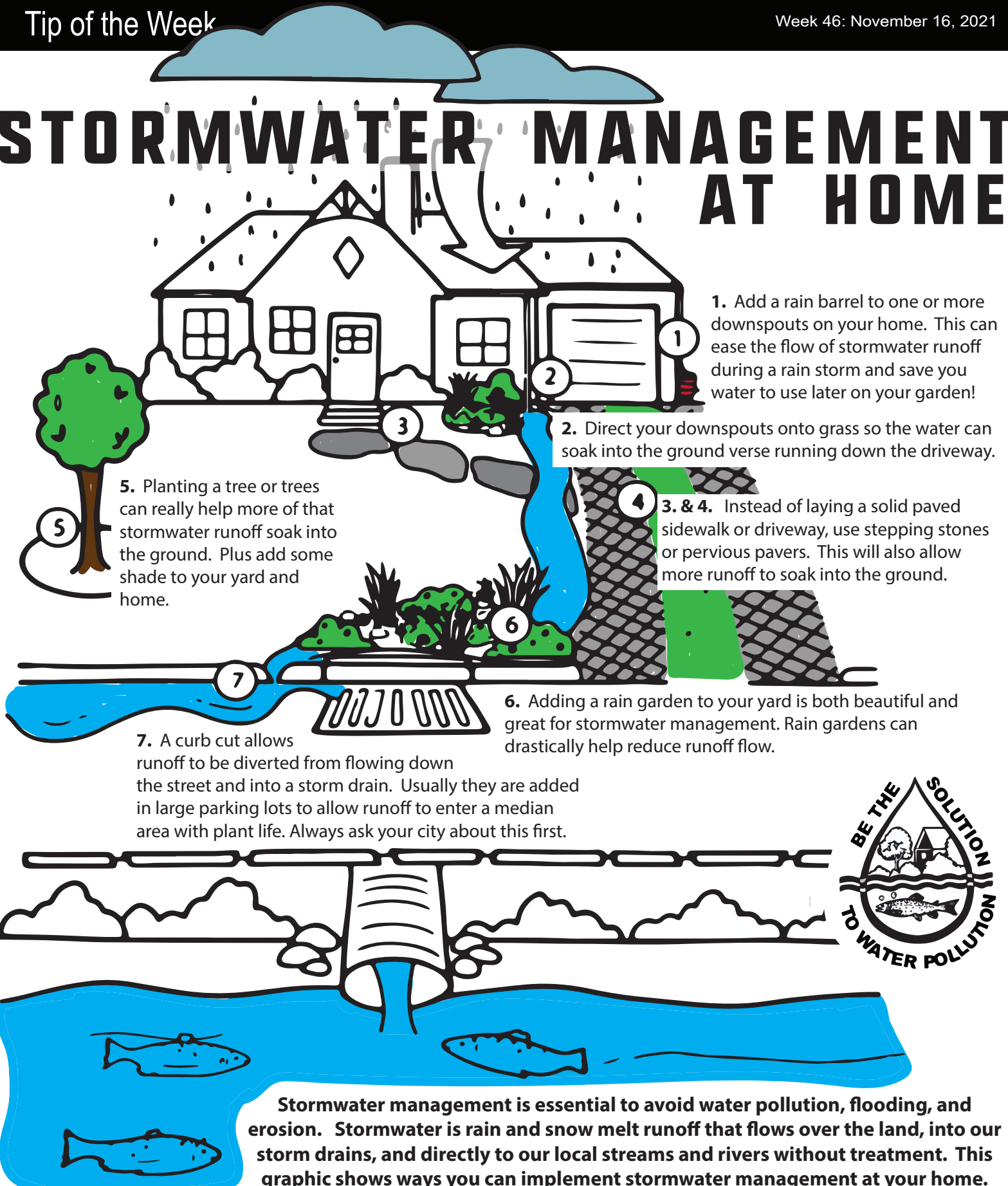


STORMWATER

Tip of the Week

Week 46: November 16, 2021

STORMWATER MANAGEMENT AT HOME



Stormwater management is essential to avoid water pollution, flooding, and erosion. Stormwater is rain and snow melt runoff that flows over the land, into our storm drains, and directly to our local streams and rivers without treatment. This graphic shows ways you can implement stormwater management at your home.