

AGENDA  
NITRO CITY COUNCIL  
JANUARY 5, 2021

CALL TO ORDER: Mayor Dave Casebolt  
Ward 1 Councilwoman Donna Boggs  
Ward 3 Councilman Joe Murphy  
Councilman at Large Bill Javins  
Councilman at Large Andy Shamblin

Recorder Rita Cox  
Ward 2 Councilwoman Cynthia Rice  
Ward 4 Councilman Michael Hill  
Councilwoman at Large Emily Barr

INVOCATION/PLEDGE OF ALLEGIANCE

FUTURE DATES OF COUNCIL: January 19, February 2 and 16

APPROVAL OF COUNCIL MINUTES: December 1, 2020

OLD BUSINESS

COUNCIL AUTHORIZATION TRANSFERRING 2207 1<sup>ST</sup> AVE. PROPERTY (FORMERLY ANTIQUES ON THE AVENUE) TO NITRO LAND REUSE AUTHORITY: Mayor Dave Casebolt

RESOLUTION AUTHORIZING RENEWAL OF JUSTICE ASSISTANCE GRANT: Recorder Rita Cox

ANNUAL REPORT FIREMEN'S PENSION & RELIEF FUND: John Young

ANNUAL REPORT POLICE PENSION FUND: John Young

NEW BUSINESS

REQUEST TO PURCHASE OFFICE FURNITURE TO ORGANIZE BUILDING DEPARTMENT FILES: Building Inspector A. J. Shinn

NITRO MUNICIPAL COURT REQUEST FOR IRREGULAR PART TIME HELPER: John Young

TREASURER REPORT

ATTORNEY REPORT

MAYOR COMMENTS

COUNCIL COMMENTS

PUBLIC COMMENTS

ADJOURNMENT

**DRAFT**

NITRO CITY COUNCIL  
MINUTES  
DECEMBER 1, 2020

CALL TO ORDER: Mayor Dave Casebolt called the meeting to order at Nitro Church of Christ with the following present with the Mayor: Recorder Rita Cox, Ward 1 Councilwoman Donna Boggs, Ward 2 Councilwoman Cynthia Rice, Ward 3 Councilman Joe Murphy, Ward 4 Councilman Michael Hill on Zoom, Councilwoman at Large Emily Barr, Councilmen at Large Bill Javins and Andy Shamblin, City Attorney Johnnie Brown, and City Treasurer John Young.

INVOCATION/PLEDGE OF ALLEGIANCE: The Invocation was given by Councilman Shamblin and the Pledge of Allegiance was led by Councilwoman Barr.

FUTURES DATES OF COUNCIL: Mayor Casebolt said the future dates of Council are December 15 and January 5 and 19.

APPROVAL OF COUNCIL MINUTES: RECORDER RITA COX MADE THE MOTION TO APPROVE THE MINUTES WITH A SECOND BY COUNCILMAN BILL JAVINS AND THE MOTION PASSED.

OLD BUSINESS

BUDGET REVISION: COUNCILMAN ANDY SHAMBLIN MADE THE MOTION TO APPROVE THE RESOLUTION TO CORRECT THE BUDGET REVISION ORIGINALLY SUBMITTED AT THE NOVEMBER 17, 2020 MEETING. THERE WAS A SECOND BY COUNCILWOMAN DONNA BOGGS AND COUNCIL VOTED FOR THE MOTION.

NEW BUSINESS

ONE TIME TEMPORARY SALARY ENHANCEMENT FOR CITY EMPLOYEES: COUNCILWOMAN DONNA BOGGS MADE THE MOTION THAT POLICE, FIRE, AND SANITATION EMPLOYEES BE PAID \$1000 AS A ONE TIME TEMPORARY SALARY ENHANCEMENT FOR HAZARD PAY FROM THE THF ACCOUNT. THERE WAS A SECOND BY COUNCILMAN BILL JAVINS. VOTE WAS UNANIMOUS FOR THE MOTION. COUNCILWOMAN BOGGS MADE THE MOTION THAT REMAINING CITY EMPLOYEES BE PAID \$1000 ONE TIME SALARY ENHANCEMENT WITH A SECOND BY COUNCILMAN BILL JAVINS. THE MOTION CARRIED.

OPEN BIDS FOOD PANTRY: COUNCILMAN BILL JAVINS MADE THE MOTION THAT COUNCIL ACCEPT THE SOLE BID BY J. D. CREWDSON CONTRUCTION FOR \$28,100.00 TO MAKE THE REQUESTED REPAIRS AND UPGRADES TO THE NITRO FOOD PANTRAY IN THE WEST SATTES SCHOOL ON LEE AVENUE. THERE WAS A SECOND BY COUNCILMAN JOE MURPHY AND A UNANIMOUS VOTE FOR THE MOTION.

ATTORNEY REPORT: Johnnie Brown did not have a public report to present but said he was prepared to take questions from Council.

TREASURER REPORT: RECORDER COX MADE THE MOTION TO ACCEPT THE REPORTS FROM THE TREASURER WITH A SECOND BY COUNCILMAN SHAMBLIN. THE MOTION PASSED.

MAYOR COMMENTS: Mayor Casebolt said there will be a scope meeting with USDA representatives to discuss the rehabilitation project for the Ridenour Lake and dam. There will be a meeting a 10:00 am with city representatives and then at public meeting at 7:00 pm.

COUNCIL COMMENTS: Recorder Cox said with the end of the calendar year just ahead and budget talks beginning soon the different agencies of city government should be scheduled to present financial reports to Council at the next meetings.

PUBLIC COMMENTS: Kim Reed said the Twelve Days of Christmas is starting soon and tickets can be purchased through her office or with participating businesses.

ADJOURNMENT: COUNCIWOMAN DONNA BOGGS MADE THE MOTION TO ADJOURN WITH A SECOND BY COUNCILWOMAN EMILY BARR. THE MOTION CARRIED.

---

DAVE CASEBOLT, MAYOR

**DRAFT**

---

RITA COX, RECORDER

## **RESOLUTION**

The Council of **City of Nitro** met on \_\_\_\_\_ (date) with a quorum present and passed the following resolution.

Be it resolved that the Council of **City of Nitro** hereby authorizes **Dave Casebolt, Mayor** of the **City of Nitro**, to act on its behalf to enter into a contractual agreement with the Division of Administrative Services, Justice and Community Services to receive and administer grant funds pursuant to provisions of the Justice Assistance Grant program.

Signed: \_\_\_\_\_

Council Clerk



**Annual Report of Policemen's and Firemen's Pension and Relief Funds  
to the Municipal Pensions Oversight Board  
as required by WV Code §8-22-19(d)(1)(B) and §8-22-22a(a)**

Pension Fund: CITY OF NITRO POLICE PENSION  
 Treasurer: John H. Young, CPA  
 Municipality: City of Nitro  
 Fiscal Year (July 1 - June 30): FY2020  
 Actuarial Funding Method:  Standard Funding Method  
 Optional Funding Method  
 Alternative Funding Method (107%)  
 % Necessary to Maintain Plan Solvency for 15 Years

PART I - Asset Reconciliation from Beginning of Fiscal Year to End of Fiscal Year		Item	Amount
<b>Beginning Fair Value of Pension Plan</b>		<b>July 1 (cash value)</b>	<b>\$ 4,456,305.25</b>
a. Prior year net receivable/payable			
<b>Beginning Fair Value of Pension Plan</b>		<b>July 1 (accrued value)</b>	<b>\$ 4,456,305.25</b>
<b>I. Revenue During Fiscal Year</b>			
<b>1. Employee Contributions</b>			
a. For Employees hired prior to Jan. 1, 2010	Percent of Gross Salary	18.00%	\$ 33,359.83
b. For Employees hired on or after Jan. 1, 2010	Percent of Gross Salary	9.50%	\$ 61,229.14
c. Total Employee Contributions			\$ 94,588.97
<b>2. Government Contributions</b>			
a. From Parent Local Government	Required employer contributions from your municipality		\$ 203,595.26
b. Overpayment Authorized by City Council Pursuant to §WV Code 8-22-27A(d)			\$ -
c. Additional Employer Contributions From Your Municipality			\$ -
d. From State Government	Municipal Pensions Oversight Board (premium surcharges on fire and casualty insurance)		\$ 175,848.27
e. Total Government Contributions			\$ 379,443.53
<b>3. Receivable Contributions</b>			
a. Employee Contributions			\$ -
b. Local Government Contributions			\$ -
c. State Government Contributions			\$ -
d. Other Contributions			\$ -
e. Total Receivable Contributions			\$ -
<b>4. Earnings on Investments</b>			
a. Net Appreciation/(Depreciation) of Fair Value of Investments			\$ (22,153.80)
b. Net Realized Gain/(Loss) on Sale/Exchange			\$ -
c. Interest and Dividends			\$ 87,385.93
d. Other Income			\$ -
e. Investment Expenses (enter as negative)			\$ (15,482.42)
f. Receivable Investment Income			\$ -
g. Payable Investment Expenses (enter as negative)			\$ -
h. Total Earnings on Investments			\$ 49,749.71
<b>5. All Other Revenues</b>			
Please Specify			
<b>Total Revenues</b>			<b>\$ 523,782.21</b>
The sum of items 1.1. through 1.7.			

**Annual Report of Policemen's and Firemen's Pension and Relief Funds  
to the Municipal Pensions Oversight Board  
as required by WV Code §8-22-19(d)(1)(B) and §8-22-22a(a)**

Item		Amount
<b>II Expenditures During Fiscal Year</b> <small>Does not include Investment Expenses, see I.4 e. and I.4 g. on first page.</small>		
<b>1. Benefits Paid</b>	<small>Retirement, disability, survivor and any other benefits.</small>	\$ 406,145.38
<b>2. Withdrawals</b>	<small>Amount paid to employees or former employees or their survivors, representing return of contributions made by employees during the period of their employment</small>	\$ -
<b>3. Administration Expenses</b>	<small>Administrative expenses and other costs or payments not representing benefit payments or withdrawals</small>	
<b>a. Municipal Administration</b>	<small>Municipal administration fees</small>	\$ 2,400.00
<b>b. Other Administration</b>	<small>Example: Pension Secretary expenses, Rent, etc.</small>	\$ 176.57
<b>c. Total Administration Expenses</b>		\$ 2,576.57
<b>4. Payables</b>	<small>Monies payable after the end of the fiscal year</small>	
<b>a. Benefit Payments</b>		\$ -
<b>b. Withdrawals</b>		\$ -
<b>c. Administration Expenses</b>		\$ -
<b>d. Total Payables</b>		\$ -
<b>Total Expenditures</b>	<small>The sum of Items II.1. through II.4</small>	\$ 408,721.95
<b>Net Income/(Loss)</b>		\$ 115,060.26
<b>Ending Fair Value of Pension Plan</b>	<b>June 30 (cash value)</b>	\$ 4,571,365.51
<b>a. Net receivable/payable</b>		\$ -
<b>Ending Fair Value of Pension Plan</b>	<b>June 30 (accrued value)</b>	\$ 4,571,365.51



**Annual Report of Policemen's and Firemen's Pension and Relief Funds  
to the Municipal Pensions Oversight Board  
as required by WV Code §8-22-19(d)(1)(B) and §8-22-22a(a)**

<b>PART II - Asset Allocation at End of Fiscal Year</b>		
<b>1. Cash and Cash Equivalents - Short Term</b>	<b>Percent of Total Assets</b>	<b>12.69%</b>
<b>Financial Institution or Money Manager</b>	<b>Type of Account</b>	<b>Fair Value</b>
a.	Checking	\$
b.	Treasury Bills	\$
c.	Savings or Money Market Account	\$ 580,055.91
d.	Short Term Investment Funds	\$
e.	Re-Purchase Agreements	\$
f.	Commercial Paper	\$
g.	CDs and Bankers' Acceptances	\$
		<b>Fair Value</b>
<b>Total Cash and Cash Equivalents</b>	<b>The sum of items 1.a. through 1.g.</b>	<b>\$ 580,055.91</b>
<b>2. Fixed Income - Long Term</b>	<b>Percent of Total Assets</b>	<b>33.24%</b>
<b>Financial Institution or Money Manager</b>	<b>Type of Account</b>	<b>Fair Value</b>
a.	US Govt Agencies & Instruments	\$
b.	Foreign Govt, Subdivisions, Agencies or Enterprise	\$
c.	International agencies or supranational entities	\$
d.	Mortgage-related or others asset back securities	\$
e.	Corporate Debt Securities	\$
f.	Corporate Inflation-index bonds	\$
g.	Bank CD's, fixed time deposits, Bankers Acceptance	\$ 205,738.00
h.	State & Local Govt Debt Securities	\$
i.	Mutual Funds (Bonds)	\$ 1,133,555.65
j.	International Mutual Funds - Bonds	\$
k.	Exchange Traded Funds (ETF) - Bonds	\$
l.	International Exchange Traded Funds (ETF) - Bonds	\$
		<b>Fair Value</b>
<b>Total Fixed Income (at fair value)</b>	<b>The sum of items 2.a. through 2.l.</b>	<b>\$ 1,519,293.65</b>
<b>3. Equity Investments</b>	<b>Percent of Total Assets</b>	<b>54.08%</b>
<b>Financial Institution or Money Manager</b>	<b>Type of Account</b>	<b>Fair Value</b>
a.	Individual Stocks Held	\$ 731,354.31
b.	Mutual Fund Shares (Equities)	\$
c.	Exchange Traded Funds (ETF)	\$ 1,740,661.64
d.	International Stocks Held	\$
e.	International Mutual Funds - Equities	\$
f.	International Exchange Traded Funds (ETF)	\$
		<b>Fair Value</b>
<b>Total Equity Investments (at fair value)</b>	<b>The sum of items 3.a. through 3.f.</b>	<b>\$ 2,472,015.95</b>
<b>4. Alternative Investments</b>	<b>Percent of Total Assets</b>	<b>0.00%</b>
<b>Financial Institution or Money Manager</b>	<b>Type of Account</b>	<b>Fair Value</b>
a.	Real Estate Investment Trust	\$
b.	Private Equity Fund	\$
c.	Hedge Funds	\$
d.	Other Alternative Investments	\$
		<b>Fair Value</b>
<b>Total Alternative Investments (at fair value)</b>	<b>The sum of items 4.a. through 4.d.</b>	<b>\$ -</b>
<b>5. Receivables and Payables</b>	<b>Percent of Total Assets</b>	<b>0.00%</b>
	<b>Type</b>	<b>Fair Value</b>
a.	Receivable Contributions	\$
b.	Receivable Investment Income	\$
c.	Payable Investment Expense	\$
d.	Payable Benefits, Withdrawals, and Admin Expenses	\$
		<b>Fair Value</b>
<b>Net Receivable/(Payable)</b>	<b>The sum of items 5.a. through 5.d.</b>	<b>\$ -</b>
<b>Total Assets</b>	<b>Sum of 1. through 5.</b>	<b>\$ 4,571,365.51</b>
<b>6. Total return on investments for the period of July 1 thru June 30</b>	<b>(Obtain from financial institution or money manager)</b>	



**Annual Report of Policemen's and Firemen's Pension and Relief Funds  
to the Municipal Pensions Oversight Board  
as required by WV Code §8-22-19(d)(1)(B) and §8-22-22a(a)**

**PART III - Membership and Beneficiaries**

\* Please report the figures requested below, for the fiscal year reported on page 1. To figure the Average Monthly Number of Persons, add figures for each month and divide by 12. Please round to two decimal places. An employee must have been paid for 100 hours in any month to be included in that month.

\*\* Please report the total number of disability applications received during the fiscal year, the status of each application at the end of the fiscal year, the total applications granted and denied, and the percentage of disability benefit recipients to the total number of active members of the fund. This requirement satisfies §8-22-23a(a) of the WV Code if the report is submitted to the Municipal Pensions Oversight Board prior to August 1st of each year.

Item		Avg. Monthly #
<b>I. Members of your Pension Fund</b>		
Exclude Beneficiaries		
1. Active Members	Current number of employees contributing to the pension fund	19.25
2. Inactive Members	Non-active vested members and employees on extended leave without pay	
<b>II. Beneficiaries Receiving Periodic Benefit Payments During Fiscal Year</b>		
1. Retirees		
2. Disability Retirees	Includes the new applications approved during reporting period	9.00
a. Number of Disability Applications received during the fiscal year		12.00
b. Status of each Disability Application at end of fiscal year - please attach separate sheet with details		
(1.) Disability Applications Approved during Fiscal Year		
(2.) Disability Applications Denied during Fiscal Year		
3. Percentage of Disability Benefit Recipients to the Total of Active Members in the fund		10.39%
4. Survivors (of Deceased Members) Drawing Benefits		3.00

**PART IV - Legal Thresholds for Investments**

	(1)	(2)	(3)
	%	Maximum % and \$	(Over) Under
Equity Investments	54%	75%	21%
International Securities	0%	30%	30%
Alternative Investments	0%	25%	25%
Cash/Cash Equivalents and Fixed Income (Low 25%; High 75%)	46%	25% 75%	-21% 29%
Short Term Investment - (90 days of expenses)		\$ 102,180.49	\$ (477,875.42)

**Annual Report of Policemen's and Firemen's Pension and Relief Funds  
to the Municipal Pensions Oversight Board  
as required by WV Code §8-22-19(d)(1)(B) and §8-22-22a(a)**

Pension Fund Nitro Firemen's Pension & Relief Fund

Treasurer John H Young, CPA

Municipality CITY OF NITRO

Fiscal Year (July 1 - June 30) FY20

Actuarial Funding Method

<input type="checkbox"/>	Standard Funding Method
<input type="checkbox"/>	Optional Funding Method
<input checked="" type="checkbox"/>	Alternative Funding Method (107%)
<input type="checkbox"/>	% Necessary to Maintain Plan Solvency for 15 Years

PART I - Asset Reconciliation from Beginning of Fiscal Year to End of Fiscal Year			
Item			Amount
<b>Beginning Fair Value of Pension Plan</b>	<b>July 1 (cash value)</b>		<b>\$ 2,095,658.91</b>
a. Prior year net receivable/payable			\$ -
<b>Beginning Fair Value of Pension Plan</b>	<b>July 1 (accrued value)</b>		<b>\$ 2,095,658.91</b>
<b>I. Revenue During Fiscal Year</b>			
<b>1. Employee Contributions</b>			
a. For Employees hired prior to Jan. 1, 2010	Percent of Gross Salary	7.00%	\$ 28,050.07
b. For Employees hired on or after Jan. 1, 2010	Percent of Gross Salary	9.50%	\$ 41,876.02
c. Total Employee Contributions			\$ 69,926.09
<b>2. Government Contributions</b>			
a. From Parent Local Government	Required employer contributions from your municipality		\$ 189,696.60
b. Overpayment Authorized by City Council Pursuant to §WV Code 8-22-27A(d)			
c. Additional Employer Contributions From Your Municipality			\$ 35,303.40
d. From State Government	Municipal Pensions Oversight Board (premium surcharges on fire and casualty insurance)		\$ 146,369.14
e. Total Government Contributions			\$ 371,369.14
<b>3. Receivable Contributions</b>			
a. Employee Contributions			\$ -
b. Local Government Contributions			\$ -
c. State Government Contributions			\$ -
d. Other Contributions			\$ -
e. Total Receivable Contributions			\$ -
<b>4. Earnings on Investments</b>			
a. Net Appreciation/(Depreciation) of Fair Value of Investments			\$ 4,189.96
b. Net Realized Gain/(Loss) on Sale/Exchange			\$ -
c. Interest and Dividends			\$ 38,475.35
d. Other Income			\$ -
e. Investment Expenses (enter as negative)			\$ (7,555.36)
f. Receivable Investment Income			\$ -
g. Payable Investment Expenses (enter as negative)			\$ -
h. Total Earnings on Investments			\$ 35,109.95
<b>5. All Other Revenues</b>			
Please Specify			\$ -
<b>Total Revenues</b>	The sum of Items I.1. through I.7.		<b>\$ 476,405.18</b>

**Annual Report of Policemen's and Firemen's Pension and Relief Funds  
to the Municipal Pensions Oversight Board  
as required by WV Code §8-22-19(d)(1)(B) and §8-22-22a(a)**

Item		Amount
<b>II Expenditures During Fiscal Year</b> <small>Does not include investment Expenses, see I 4 e. and I 4 g. on first page.</small>		
<b>1. Benefits Paid</b>	<small>Retirement, disability, survivor and any other benefits.</small>	\$ 372,281.01
<b>2. Withdrawals</b>	<small>Amount paid to employees or former employees or their survivors, representing return of contributions made by employees during the period of their employment</small>	\$ -
<b>3. Administration Expenses</b>	<small>Administrative expenses and other costs or payments not representing benefit payments or withdrawals.</small>	
<b>a. Municipal Administration</b>	<small>Municipal administration fees.</small>	\$ -
<b>b. Other Administration</b>	<small>Example: Pension Secretary expenses; Rent; etc</small>	\$ -
<b>c. Total Administration Expenses</b>		\$ -
<b>4. Payables</b>	<small>Monies payable after the end of the fiscal year</small>	
<b>a. Benefit Payments</b>		\$ -
<b>b. Withdrawals</b>		\$ -
<b>c. Administration Expenses</b>		\$ -
<b>d. Total Payables</b>		\$ -
<b>Total Expenditures</b>	<small>The sum of Items II.1. through II.4</small>	\$ 372,281.01
<b>Net Income/(Loss)</b>		\$ 104,124.17
<b>Ending Fair Value of Pension Plan</b>	<b>June 30 (cash value)</b>	\$ 2,199,783.08
<b>a. Net receivable/payable</b>		\$ -
<b>Ending Fair Value of Pension Plan</b>	<b>June 30 (accrued value)</b>	\$ 2,199,783.08



**Annual Report of Policemen's and Firemen's Pension and Relief Funds  
to the Municipal Pensions Oversight Board  
as required by WV Code §8-22-19(d)(1)(B) and §8-22-22a(a)**

<b>PART II - Asset Allocation at End of Fiscal Year</b>			
<b>1. Cash and Cash Equivalents - Short Term</b>		<b>Percent of Total Assets</b>	<b>25.85%</b>
<b>Financial Institution or Money Manager</b>	<b>Type of Account</b>	<b>Fair Value</b>	
a.	Checking	\$	226.47
b.	Treasury Bills	\$	-
c.	Savings or Money Market Account	\$	568,465.78
d.	Short Term Investment Funds	\$	-
e.	Re-Purchase Agreements	\$	-
f.	Commercial Paper	\$	-
g.	CDs and Bankers' Acceptances	\$	-
<b>Total Cash and Cash Equivalents</b>			<b>Fair Value</b>
		The sum of items 1.a. through 1.g.	\$ 568,692.25
<b>2. Fixed Income - Long Term</b>		<b>Percent of Total Assets</b>	<b>37.64%</b>
<b>Financial Institution or Money Manager</b>	<b>Type of Account</b>	<b>Fair Value</b>	
a.	US Govt Agencies & Instruments	\$	-
b.	Foreign Govt, Subdivisions, Agencies or Enterprise	\$	-
c.	International agencies or supranational entities	\$	-
d.	Mortgage-related or others asset back securities	\$	-
e.	Corporate Debt Securities	\$	-
f.	Corporate Inflation-index bonds	\$	-
g.	Bank CD's, fixed time deposits, Bankers Acceptance	\$	353,097.00
h.	State & Local Govt Debt Securities	\$	-
i.	Mutual Funds (Bonds)	\$	475,001.45
j.	International Mutual Funds - Bonds	\$	-
k.	Exchange Traded Funds (ETF) - Bonds	\$	-
l.	International Exchange Traded Funds (ETF) - Bonds	\$	-
<b>Total Fixed Income (at fair value)</b>			<b>Fair Value</b>
		The sum of items 2.a. through 2.l.	\$ 828,098.45
<b>3. Equity Investments</b>		<b>Percent of Total Assets</b>	<b>36.50%</b>
<b>Financial Institution or Money Manager</b>	<b>Type of Account</b>	<b>Fair Value</b>	
a.	Individual Stocks Held	\$	-
b.	Mutual Fund Shares (Equities)	\$	-
c.	Exchange Traded Funds (ETF)	\$	802,992.38
d.	International Stocks Held	\$	-
e.	International Mutual Funds - Equities	\$	-
f.	International Exchange Traded Funds (ETF)	\$	-
<b>Total Equity Investments (at fair value)</b>			<b>Fair Value</b>
		The sum of items 3.a. through 3.f.	\$ 802,992.38
<b>4. Alternative Investments</b>		<b>Percent of Total Assets</b>	<b>0.00%</b>
<b>Financial Institution or Money Manager</b>	<b>Type of Account</b>	<b>Fair Value</b>	
a.	Real Estate Investment Trust	\$	-
b.	Private Equity Fund	\$	-
c.	Hedge Funds	\$	-
d.	Other Alternative Investments	\$	-
<b>Total Alternative Investments (at fair value)</b>			<b>Fair Value</b>
		The sum of items 4.a. through 4.d.	\$ -
<b>5. Receivables and Payables</b>		<b>Percent of Total Assets</b>	<b>0.00%</b>
	<b>Type</b>	<b>Fair Value</b>	
a.	Receivable Contributions	\$	-
b.	Receivable Investment Income	\$	-
c.	Payable Investment Expense	\$	-
d.	Payable Benefits, Withdrawals, and Admin Expenses	\$	-
<b>Net Receivable/(Payable)</b>			<b>Fair Value</b>
		The sum of items 5.a. through 5.d.	\$ -
<b>Total Assets</b>		<b>Sum of 1. through 5.</b>	<b>\$ 2,199,783.08</b>
<b>6. Total return on investments for the period of July 1 thru June 30</b>		<b>(Obtain from financial institution or money manager)</b>	



**Annual Report of Policemen's and Firemen's Pension and Relief Funds  
to the Municipal Pensions Oversight Board  
as required by WV Code §8-22-19(d)(1)(B) and §8-22-22a(a)**

**PART III - Membership and Beneficiaries**

\* Please report the figures requested below, for the fiscal year reported on page 1. To figure the Average Monthly Number of Persons, add figures for each month and divide by 12. Please round to two decimal places. An employee must have been paid for 100 hours in any month to be included in that month.  
 \*\* Please report the total number of disability applications received during the fiscal year, the status of each application at the end of the fiscal year, the total applications granted and denied, and the percentage of disability benefit recipients to the total number of active members of the fund. This requirement satisfies §8-22-23a(a) of the WV Code if the report is submitted to the Municipal Pensions Oversight Board prior to August 1st of each year.

Item		Avg. Monthly #
<b>I. Members of your Pension Fund</b>		
Exclude Beneficiaries		
1. Active Members	Current number of employees contributing to the pension fund	14.67
2. Inactive Members	Non-active vested members and employees on extended leave without pay	
<b>II. Beneficiaries Receiving Periodic Benefit Payments During Fiscal Year</b>		
1. Retirees		
2. Disability Retirees	Includes the new applications approved during reporting period	2.00
a. Number of Disability Applications received during the fiscal year		
b. Status of each Disability Application at end of fiscal year - please attach separate sheet with details		
(1.) Disability Applications Approved during Fiscal Year		
(2.) Disability Applications Denied during Fiscal Year		
3. Percentage of Disability Benefit Recipients to the Total of Active Members in the fund		13.63%
4. Survivors (of Deceased Members) Drawing Benefits		2.00

**PART IV - Legal Thresholds for Investments**

	(1)	(2)	(3)
	%	Maximum % and \$	(Over) Under
Equity Investments	37%	75%	38%
International Securities	0%	30%	30%
Alternative Investments	0%	25%	25%
Cash/Cash Equivalents and Fixed Income (Low 25%; High 75%)	63%	25% 75%	-38% 12%
Short Term Investment - (90 days of expenses)		\$ 93,070.25	\$ (475,622.00)

## David Casebolt

---

**From:** Nitrocitycouncil <nitrocitycouncil-bounces@cityofnitro.org> on behalf of AJ Shinn via Nitrocitycouncil <nitrocitycouncil@cityofnitro.org>  
**Sent:** Monday, January 4, 2021 3:06 PM  
**To:** nitrocitycouncil@cityofnitro.org  
**Cc:** AJ Shinn  
**Subject:** [Nitro City Council] Building Department Office Request  
**Attachments:** Untitled attachment 00068.txt  
**Categories:** Red Category

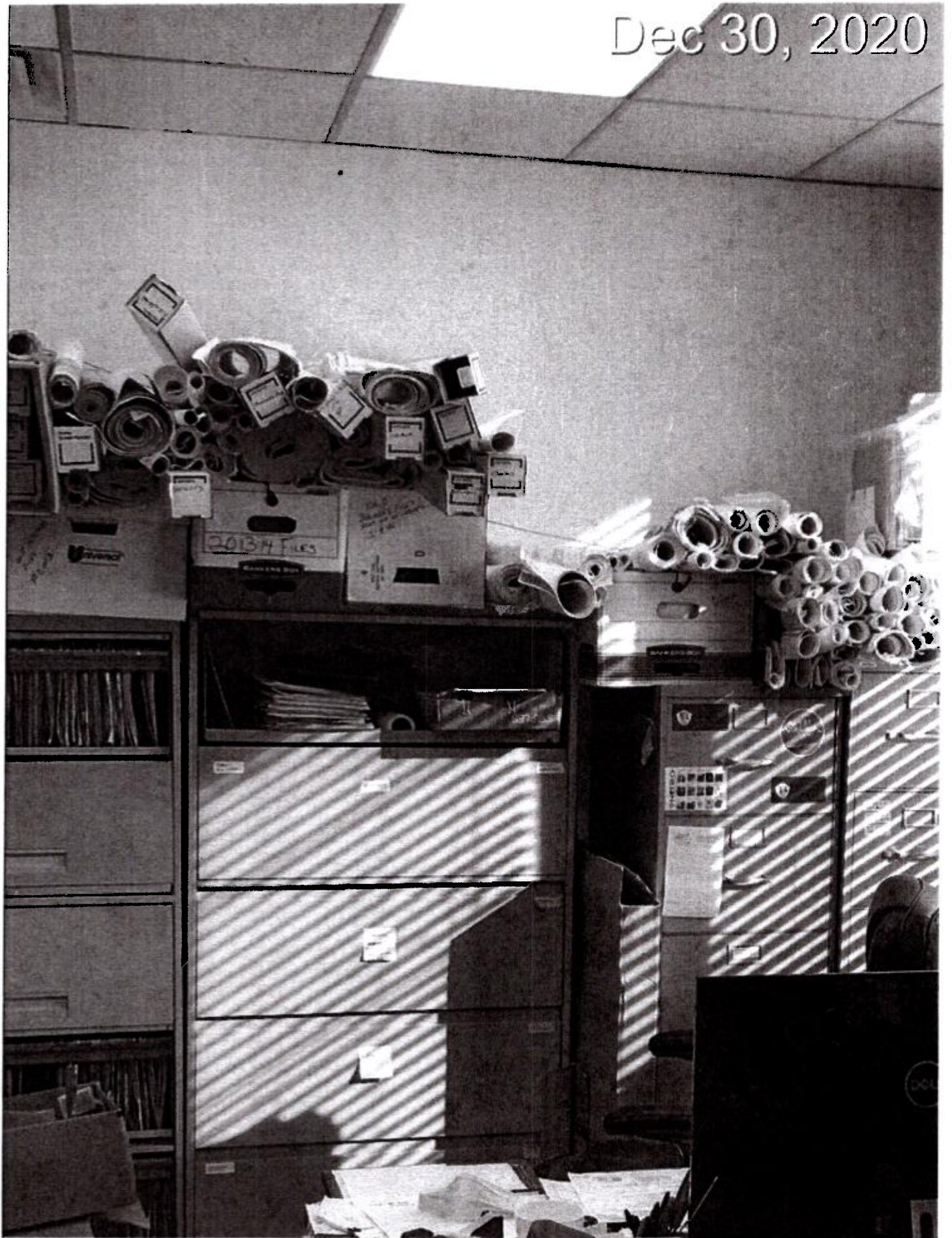
Good afternoon council members,

Attached is a copy of the proposed file cabinets and bookshelves that will help make our office more efficient and organized, along with making it look more professional. Also, I have attached a photo of what the office currently looks like.

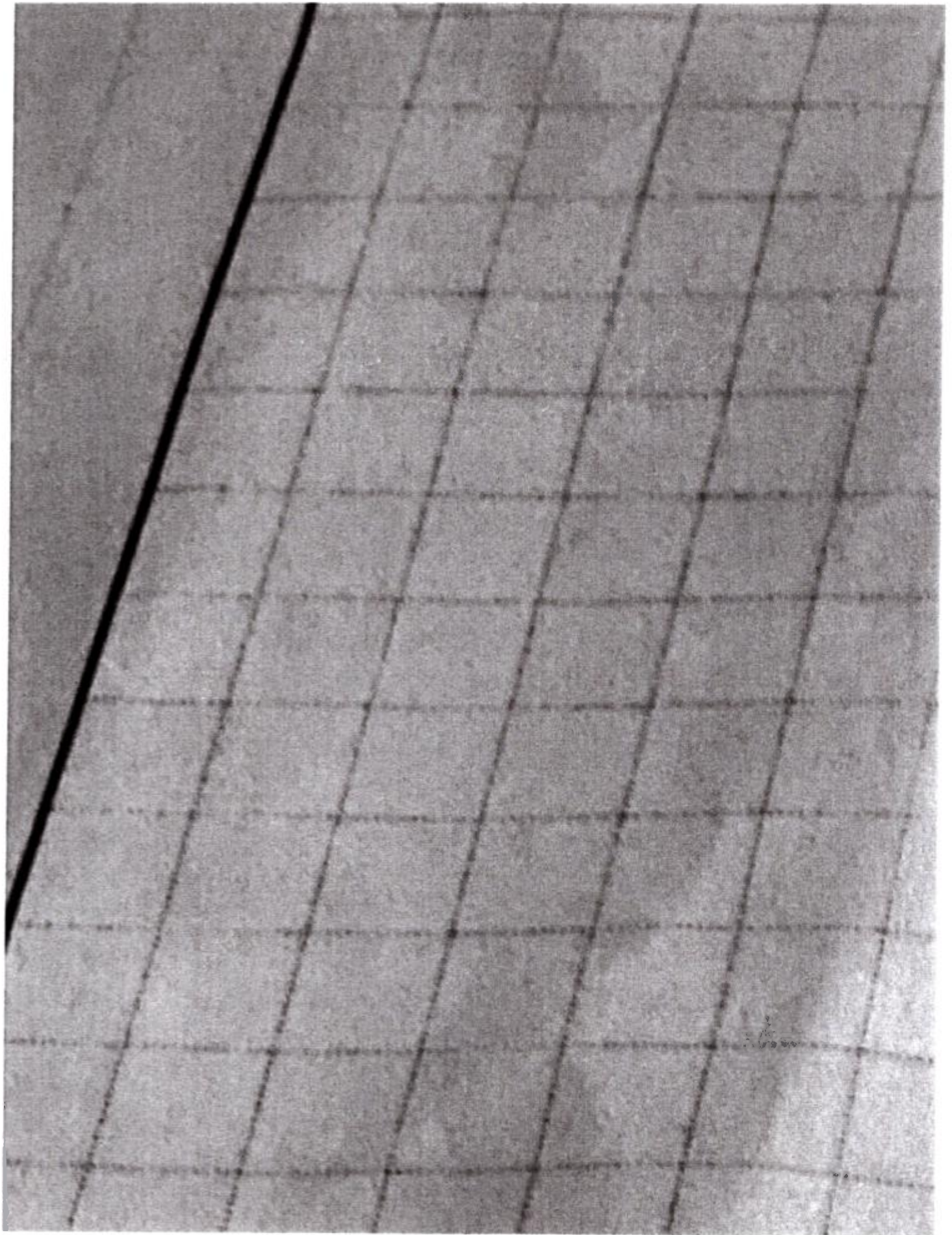
Please feel free to email or call with any questions you may have. Thank you for your consideration. I look forward to your support in getting our office organized.

Sincerely,  
AJ Shinn  
681.319.7080

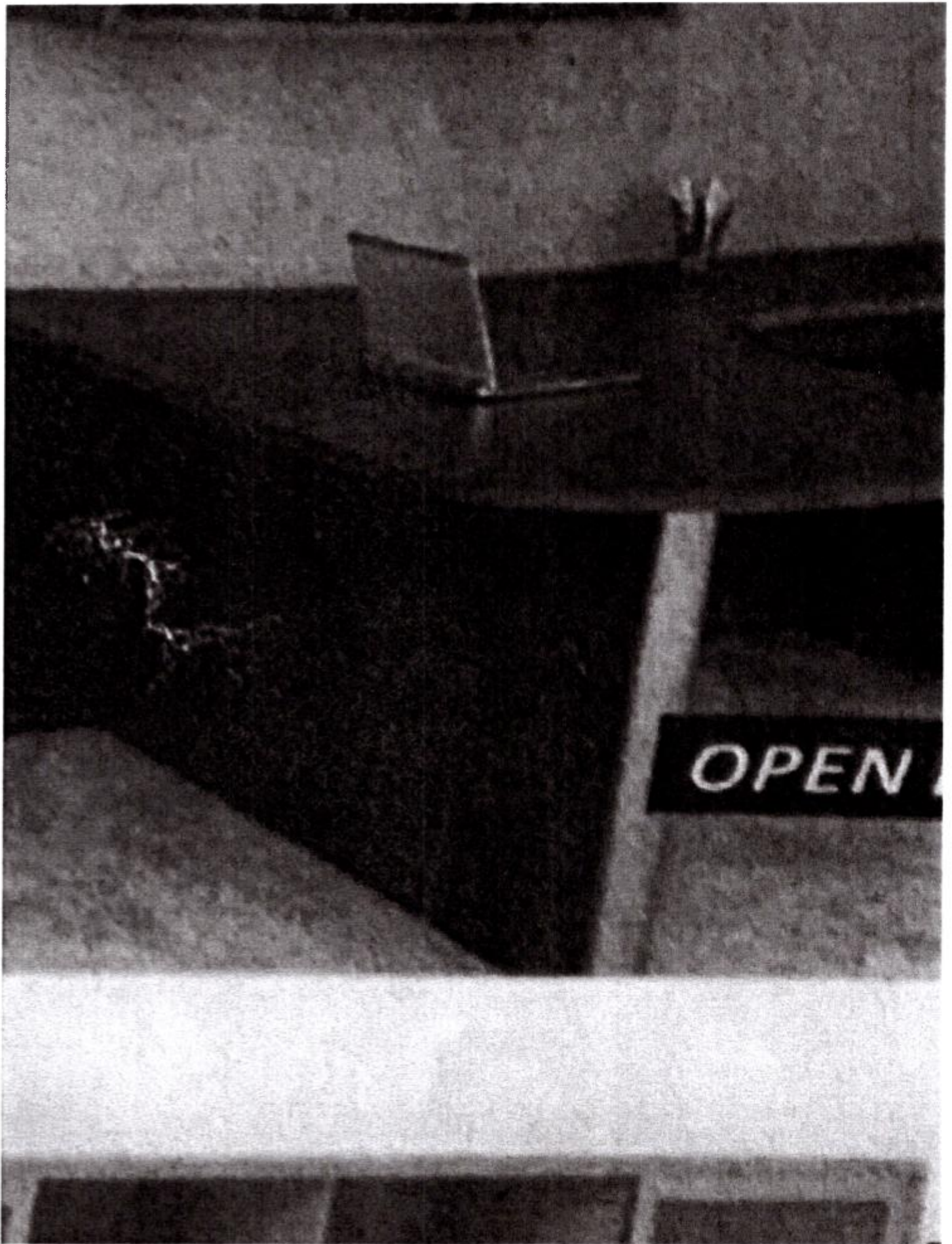
Dec 30, 2020





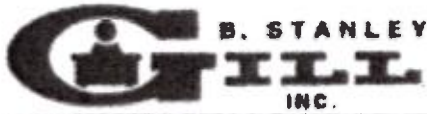








**O** *Bui*  
**E** *Syst*  
*Prot*



OFFICE FURNITURE & SYSTEMS

1119 JEFFERSON ROAD  
SOUTH CHARLESTON, WV 25309  
Telephone: 304/746-5200  
Facsimile: 304/746-5203

December 30, 2020

A.J. Shinn  
City of Nitro  
20<sup>th</sup> Street & 2<sup>nd</sup> Avenue  
Nitro, WV 25143

Proposal Number: 012-014-020A

The following amended office furniture proposal is submitted for consideration. PL Series is proposed with the following features.

- Durable High Pressure Laminate With Multiple Finishes Available.
- Modular, Can Be Reconfigured Or Expanded In Future.

**BACK WALL**

2) #PL112/2 Lateral File Credenza (List \$1,922.00 ea.)	\$962.00 ea.	\$1,924.00
4) #PL153 Open Hutch (List \$411.00 ea.)	\$209.00 ea.	\$ 836.00
1) #PL184 4-Drawer Lateral File (List \$2,449.00 ea.)		\$1,223.00
<b>TOTAL COST FOR ALL PRODUCT (Total List \$7,937.00).....</b>		<b>\$3,983.00</b>

Nitro Municipal Court

419 1<sup>st</sup> Ave South

Nitro WV. 25143

304-755-0701

To Whom it May Concern:

Nitro Municipal Court is requesting an irregular part time helper.

Duties will include sorting and boxing old files and scanning court dispositions into the computer.

This person will work no more than 16 hours a week at \$10.00 an hour.

When the job is complete the position will no longer be needed.

This position will only last until June 30, 2021. I am requesting Kelsi Glover take the temporary part time position, she is already familiar with the job. Kelsi has been coming in and helping me and because of Covid-19 I am comfortable with her being in my office.

Thank You,



Amy Fulks

Nitro Municipal Court Clerk





Account	Name	Balance
<b>Fund: 001 - GENERAL FUND</b>		
<b>Assets</b>		
001-101-101	Receipts Account	565,995.19
001-101-102	Disbursements Account	64,505.55
001-101-103	L GOV ACCOUNT	100.00
001-101-104	Payroll Account	538,962.06
001-102-105	JHF Bank Account	510,574.44
001-102-106	City of Nitro Hotel, Motel, Ta	100,575.12
001-102-107	Fire Fee Account	200,587.28
001-102-108	Fair & Festivals	9,120.81
001-102-109	Firemen's Equip Fund	124,739.92
001-102-110	Peoples FCU CD	9,185.97
001-102-112	Peoples FCU CD	256,561.77
001-102-113	Police State M-Dent	45,311.54
001-102-114	Police To Be Forfeited	25,732.66
001-102-115	Federal Mdent Fund	6,053.34
001-102-116	Huntington Library Acc	27,800.10
001-102-118	Sales Tax Account	768,010.59
001-102-120	Municipal Court	144,608.66
001-102-121	Abandoned Property Registration	1,387.00
001-109-200	Taxes Receivable	1,126,402.66
001-109-201	Munci Fees Receivable	616,663.66
001-109-202	Accts Receivable Misc	78,804.30
001-109-204	Uncollectible MFS	-496,757.50
001-109-205	Uncollectible AR Misc	-60,200.00
001-122-201	Prepaid Expenes	20,769.29
001-125-202	Investments Real Estate	7,403.61
	<b>Total Assets:</b>	<b>4,692,898.02</b>
		<b>4,692,898.02</b>
<b>Liability</b>		
001-201-230	DISB - Accounts Payable	141,362.81
001-221-205	Fica Payable	-41.18
001-222-206	Federal Tax Payable	-9.75
001-223-208	State Tax Payable	-17.00
001-224-209	Firemens Pension Payable	25.57
001-225-213	Insurance Payable	369.20
001-227-216	Other Deductions Payable	327.66
001-228-220	SUTA Tax Payable	179.63
001-239-221	Deferred Revenues	283,198.85
001-241-222	Funds Seized Police	25,732.66
001-242-000	Unapplied Credit Liabilities	16,270.61
	<b>Total Liability:</b>	<b>466,692.60</b>
<b>Equity</b>		
001-296-303	Restricted General Fund	153,319.50
001-297-304	Committed General Fund	566,569.93
001-298-305	Assigned General Fund	7,742.81
001-299-301	Fund Balance General Fund	1,751,370.07
001-299-306	Unassigned General Fund	632,905.42
	<b>Total Beginning Equity:</b>	<b>3,111,907.73</b>

**Balance Sheet**

**As Of 11/30/2020**

<b>Account</b>	<b>Name</b>	<b>Balance</b>
Total Revenue		4,667,488.01
Total Expense		<u>3,553,190.32</u>
Revenues Over/Under Expenses		1,114,297.69
	<b>Total Equity and Current Surplus (Deficit):</b>	<b>4,226,205.42</b>
	<b>Total Liabilities, Equity and Current Surplus (Deficit):</b>	<b><u>4,692,898.02</u></b>



Payroll Set: 01-Payroll Set 01

Department: Building Department - Building Department

Employee Number	Employee Name	Pay Code	# of Payments	Units	Pay Amount	
371	Newcome, Mark	Holiday - Holiday	1	16.00	182.72	
		Regular - Regular	2	142.00	1,630.22	
		SALARY ENHANCEMENT - SALAR	1	1.00	1,000.00	
		SickLeave - SickLeave	1	2.00	23.06	
		<b>371 - Newcome Total:</b>			<b>161.00</b>	<b>2,836.00</b>
377	Wright, James	Holiday - Holiday	1	16.00	166.40	
		Regular - Regular	2	136.00	1,414.40	
		SafetyDirector - SafetyDirector	2	0.00	150.00	
		SALARY ENHANCEMENT - SALAR	1	1.00	1,000.00	
		SickLeave - SickLeave	1	8.00	83.20	
		<b>377 - Wright Total:</b>			<b>161.00</b>	<b>2,814.00</b>
		534	Shinn, Andrew	AnnualLeave - AnnualLeave	1	8.00
CallOut - Call Out OT	2			4.00	162.30	
Hazard Pay - Hazard Pay	1			1.00	1,000.00	
Holiday FD8 - Holiday FD8	1			16.00	1,082.00	
Holiday Work FD8 - Holiday Worl	1			21.50	2,035.51	
Overtime - Overtime	1			11.00	446.33	
Regular - Regular	2			142.00	3,841.10	
<b>534 - Shinn Total:</b>			<b>203.50</b>	<b>8,783.64</b>		
542	Atkins, Jonathan	Hazard Pay - Hazard Pay	1	1.00	1,000.00	
		Military - Military	1	24.00	620.16	
		Regular - Regular	2	28.00	723.52	
		<b>542 - Atkins Total:</b>			<b>53.00</b>	<b>2,343.68</b>
<b>Building Department - Building Department Total:</b>				<b>578.50</b>	<b>16,777.32</b>	

Department: City Hall - City Hall

Employee Number	Employee Name	Pay Code	# of Payments	Units	Pay Amount		
255	Burt, Mary	Cleaning - Cleaning	2	0.00	520.00		
		CouncilRaise - CouncilRaise	2	0.00	38.46		
		Holiday - Holiday	1	16.00	324.96		
		Regular - Regular	2	144.00	2,924.64		
		SALARY ENHANCEMENT - SALAR	1	1.00	1,000.00		
		VacatBuyOut - VacatBuyOut	1	40.00	812.40		
		<b>255 - Burt Total:</b>		<b>201.00</b>	<b>5,620.46</b>		
		286	Hardman, Kelly	Cleaning - Cleaning	2	0.00	200.00
				CouncilRaise - CouncilRaise	2	0.00	38.46
				Holiday - Holiday	1	16.00	275.52
Regular - Regular	2			114.00	1,963.08		
SALARY ENHANCEMENT - SALAR	1			1.00	1,000.00		
Sickleave - Sickleave	1			8.00	137.76		
Vacation - Vacation	1	22.00	378.84				
<b>286 - Hardman Total:</b>		<b>161.00</b>	<b>3,993.66</b>				
<b>City Hall - City Hall Total:</b>				<b>362.00</b>	<b>9,614.12</b>		

Department: City Planner - City Planner

Employee Number	Employee Name	Pay Code	# of Payments	Units	Pay Amount
376	Cottrell, Kimberly	Comp Taken - Comp Taken	2	16.00	0.00
		Regular - Regular	1	74.00	0.00
		Salary - Salary	2	160.00	3,139.20
		SALARY ENHANCEMENT - SALAR	1	1.00	1,000.00
		<b>376 - Cottrell Total:</b>		<b>251.00</b>	<b>4,139.20</b>
<b>City Planner - City Planner Total:</b>				<b>251.00</b>	<b>4,139.20</b>

Department: Council - Council

Employee Number	Employee Name	Pay Code	# of Payments	Units	Pay Amount
152	Javins, William	Salary - Salary	1	1.00	500.00
		<b>152 - Javins Total:</b>		<b>1.00</b>	<b>500.00</b>
155	Shamblin, Andrew	Salary - Salary	1	1.00	500.00
		<b>155 - Shamblin Total:</b>		<b>1.00</b>	<b>500.00</b>
157	Boggs, Donna	Salary - Salary	1	1.00	500.00
		<b>157 - Boggs Total:</b>		<b>1.00</b>	<b>500.00</b>
158	Hill, Michael	Salary - Salary	1	1.00	500.00
		<b>158 - Hill Total:</b>		<b>1.00</b>	<b>500.00</b>



Employee Number	Employee Name	Pay Code	# of Payments	Units	Pay Amount	
160	McGill, Cynthia	Salary - Salary	1	1.00	500.00	
<b>160 - McGill Total:</b>					<b>1.00</b>	<b>500.00</b>
161	Murphy, Joseph	Salary - Salary	1	1.00	500.00	
<b>161 - Murphy Total:</b>					<b>1.00</b>	<b>500.00</b>
162	Barr, Emily	Salary - Salary	1	1.00	500.00	
<b>162 - Barr Total:</b>					<b>1.00</b>	<b>500.00</b>
<b>Council - Council Total:</b>					<b>7.00</b>	<b>3,500.00</b>

**Department: CVB - CVB**

Employee Number	Employee Name	Pay Code	# of Payments	Units	Pay Amount	
373	Deiss, Joseph	Regular - Regular	2	160.00	0.00	
		Salary - Salary	2	160.00	2,636.80	
		SALARY ENHANCEMENT - SALAR	1	1.00	1,000.00	
<b>373 - Deiss Total:</b>					<b>321.00</b>	<b>3,636.80</b>
<b>CVB - CVB Total:</b>					<b>321.00</b>	<b>3,636.80</b>

**Department: Fire - Fire**

Employee Number	Employee Name	Pay Code	# of Payments	Units	Pay Amount	
536	Mathes, Casey	Comp Earned - Comp Earned	2	30.00	0.00	
		Hazard Pay - Hazard Pay	1	1.00	1,000.00	
		Holiday FD8 - Holiday FD8	1	16.00	1,319.20	
		Regular - Regular	2	144.00	0.00	
		Salary - Salary	2	160.00	5,276.80	
<b>536 - Mathes Total:</b>					<b>351.00</b>	<b>7,596.00</b>

Employee Number	Employee Name	Pay Code	# of Payments	Units	Pay Amount	
538	Mathes, Chad	CallOutOT - Call Out OT	1	2.00	59.58	
		Hazard Pay - Hazard Pay	1	1.00	1,000.00	
		Holiday Earned FD - Holiday Earn	1	32.00	0.00	
		Holiday Taken FD - Holiday Taker	1	48.00	953.28	
		HolidayWork - HolidayWork	1	16.00	476.64	
		Overtime - Overtime	2	88.00	2,621.53	
		Regular - Regular	2	168.00	3,336.48	
<b>538 - Mathes Total:</b>					<b>355.00</b>	<b>8,447.51</b>

Employee Number	Employee Name	Pay Code	# of Payments	Units	Pay Amount	
540	Ely, Robert	Hazard Pay - Hazard Pay	1	1.00	1,000.00	
		Holiday Earned FD - Holiday Earn	1	48.00	0.00	
		Holiday Taken FD - Holiday Taker	1	24.00	466.08	
		Overtime - Overtime	1	24.00	699.12	
		Regular - Regular	2	192.00	3,728.64	
<b>540 - Ely Total:</b>					<b>289.00</b>	<b>5,893.84</b>

543	Bonnett, Zachary	CallOutOT - Call Out OT	1	2.00	56.37
		Hazard Pay - Hazard Pay	1	1.00	1,000.00
		Holiday Earned FD - Holiday Earn	1	48.00	0.00
		Holiday Taken FD - Holiday Taker	1	48.00	901.92
		Regular - Regular	2	168.00	3,156.72
		UniformsFD - UniformsFD	1	0.00	269.20
		<b>543 - Bonnett Total:</b>		<b>267.00</b>	<b>5,384.21</b>
548	Kiser, Garrett	CallOutOT - Call Out OT	1	2.00	50.31
		Hazard Pay - Hazard Pay	1	1.00	1,000.00
		Holiday Earned FD - Holiday Earn	1	48.00	0.00
		Holiday Taken FD - Holiday Taker	1	48.00	804.96
		Overtime - Overtime	2	76.50	1,924.36
		Regular - Regular	2	144.00	2,414.88
		SickLeave - SickLeave	1	24.00	402.48
		<b>548 - Kiser Total:</b>		<b>343.50</b>	<b>6,596.99</b>
549	Setliff, James	Hazard Pay - Hazard Pay	1	1.00	1,000.00
		Holiday Earned FD - Holiday Earn	1	40.00	0.00
		HolidayWork - HolidayWork	1	8.00	199.08
		Regular - Regular	2	120.00	1,990.80
		SickLeave - SickLeave	1	24.00	398.16
		StepUpPay - StepUpPay	1	72.00	1,314.72
		<b>549 - Setliff Total:</b>		<b>265.00</b>	<b>4,902.76</b>
550	Harvey, Ronnie	CallOutOT - Call Out OT	1	2.00	49.77
		Hazard Pay - Hazard Pay	1	1.00	1,000.00
		Holiday Earned FD - Holiday Earn	1	24.00	0.00
		Holiday Taken FD - Holiday Taker	1	12.00	199.08
		HolidayWork - HolidayWork	1	24.00	597.24
		Regular - Regular	2	132.00	2,189.88
		SickLeave - SickLeave	1	24.00	398.16
		StepUpPay - StepUpPay	1	48.00	876.48
		<b>550 - Harvey Total:</b>		<b>267.00</b>	<b>5,310.61</b>
552	Carr, Cody	Annualleave - Annualleave	1	72.00	1,118.88
		Hazard Pay - Hazard Pay	1	1.00	1,000.00
		Holiday Earned FD - Holiday Earn	1	16.00	0.00
		HolidayWork - HolidayWork	1	32.00	745.92
		Overtime - Overtime	1	65.50	1,526.81
		Regular - Regular	2	144.00	2,237.76
		<b>552 - Carr Total:</b>		<b>330.50</b>	<b>6,629.37</b>

556

Grishaber, Robert

CallOutOT - Call Out OT	1	2.00	46.08
Hazard Pay - Hazard Pay	1	1.00	1,000.00
Holiday Earned FD - Holiday Earn	1	32.00	0.00
Holiday Taken FD - Holiday Taker	1	24.00	368.64
HolidayWork - HolidayWork	1	16.00	368.64
Overtime - Overtime	1	6.00	138.24
Regular - Regular	2	192.00	2,949.12
<b>556 - Grishaber Total:</b>		<b>273.00</b>	<b>4,870.72</b>

558

Ashley, Christopher

CallOutOT - Call Out OT	2	12.00	265.32
Hazard Pay - Hazard Pay	1	1.00	1,000.00
Holiday Earned FD - Holiday Earn	1	24.00	0.00
HolidayWork - HolidayWork	1	24.00	530.64
Overtime - Overtime	1	3.00	66.33
Regular - Regular	2	216.00	3,183.84
<b>558 - Ashley Total:</b>		<b>280.00</b>	<b>5,046.13</b>

562

Petry, Chase

CallOutOT - Call Out OT	1	2.00	42.81
Hazard Pay - Hazard Pay	1	1.00	1,000.00
Holiday Earned FD - Holiday Earn	1	40.00	0.00
Holiday Taken FD - Holiday Taker	1	24.00	342.48
HolidayWork - HolidayWork	1	8.00	171.24
Overtime - Overtime	2	27.00	577.94
Regular - Regular	2	192.00	2,739.84
TrainOT - TrainOT	1	2.00	42.81
<b>562 - Petry Total:</b>		<b>296.00</b>	<b>4,917.12</b>

563

Lovejoy, Terrell

Hazard Pay - Hazard Pay	1	1.00	1,000.00
Holiday Taken FD - Holiday Taker	1	48.00	661.92
SickLeave - SickLeave	1	12.00	165.48
<b>563 - Lovejoy Total:</b>		<b>61.00</b>	<b>1,827.40</b>

Fire - Fire Total: 3,378.00 67,422.66

**Department: Health & Sanitation - Health & Sanitation**

Employee Number 684 Employee Name Hinkley, Carl

Pay Code	# of Payments	Units	Pay Amount
CouncilRaise - CouncilRaise	2	0.00	38.46
Hazard Pay - Hazard Pay	1	1.00	1,000.00
Holiday - Holiday	1	16.00	191.20
Regular - Regular	2	144.00	1,720.80
<b>684 - Hinkley Total:</b>		<b>161.00</b>	<b>2,950.46</b>



Employee Number	Employee Name	Pay Code	# of Payments	Units	Pay Amount
<b>699 - McNealy, James</b>					
		CouncilRaise - CouncilRaise	2	0.00	38.46
		Hazard Pay - Hazard Pay	1	1.00	1,000.00
		Holiday - Holiday	1	16.00	191.20
		Overtime - Overtime	1	14.00	250.95
		Regular - Regular	2	144.00	1,720.80
		<b>699 - McNealy Total:</b>		<b>175.00</b>	<b>3,201.41</b>
<b>721 - McNealy, John</b>					
		CouncilRaise - CouncilRaise	2	0.00	38.46
		Hazard Pay - Hazard Pay	1	1.00	1,000.00
		Holiday - Holiday	1	16.00	191.20
		Regular - Regular	2	104.00	1,242.80
		Vacation - Vacation	1	40.00	478.00
		<b>721 - McNealy Total:</b>		<b>161.00</b>	<b>2,950.46</b>
<b>729 - Southall, Floyd</b>					
		Hazard Pay - Hazard Pay	1	1.00	1,000.00
		Holiday - Holiday	1	16.00	212.48
		Regular - Regular	2	120.00	1,593.60
		Vacation - Vacation	1	24.00	318.72
		<b>729 - Southall Total:</b>		<b>161.00</b>	<b>3,124.80</b>
<b>742 - Gardner, Tyler</b>					
		Hazard Pay - Hazard Pay	1	1.00	1,000.00
		Holiday - Holiday	1	16.00	176.96
		Regular - Regular	2	144.00	1,592.64
		<b>742 - Gardner Total:</b>		<b>161.00</b>	<b>2,769.60</b>
<b>743 - Slater, Theodore</b>					
		Hazard Pay - Hazard Pay	1	1.00	1,000.00
		Holiday - Holiday	1	16.00	176.96
		Regular - Regular	2	136.00	1,504.16
		Sickleave - Sickleave	1	8.00	88.48
		<b>743 - Slater Total:</b>		<b>161.00</b>	<b>2,769.60</b>
<b>745 - Scott, Lyquan</b>					
		Hazard Pay - Hazard Pay	1	1.00	1,000.00
		Holiday - Holiday	1	16.00	176.96
		Regular - Regular	2	144.00	1,592.64
		<b>745 - Scott Total:</b>		<b>161.00</b>	<b>2,769.60</b>
<b>Department: Library - Library</b>					
		<b>Health &amp; Sanitation - Health &amp; Sanitation Total:</b>		<b>1,141.00</b>	<b>20,535.93</b>
<b>822 - Godby-Chin, Diana</b>					
		Cleaning - Cleaning	2	0.00	230.40
		Holiday - Holiday	1	16.00	0.00
		Regular - Regular	2	144.00	0.00
		Salary - Salary	2	160.00	2,958.40
		SALARY ENHANCEMENT - SALAR	1	1.00	1,000.00
		<b>822 - Godby-Chin Total:</b>		<b>321.00</b>	<b>4,188.80</b>

823	Price, Jennifer	Holiday - Holiday	1	16.00	241.76
		Regular - Regular	2	128.00	1,934.08
		SALARY ENHANCEMENT - SALAR	1	1.00	1,000.00
		Vacation - Vacation	1	16.00	241.76
		<b>823 - Price Total:</b>		<b>161.00</b>	<b>3,417.60</b>
827	Spangler, Christina	COVID19 - COVID19	1	8.00	85.28
		Holiday - Holiday	1	16.00	170.56
		Regular - Regular	2	136.00	1,449.76
		SALARY ENHANCEMENT - SALAR	1	1.00	1,000.00
		<b>827 - Spangler Total:</b>		<b>161.00</b>	<b>2,705.60</b>
		<b>Library - Library Total:</b>		<b>643.00</b>	<b>10,312.00</b>

Department: Mayor - Mayor

143	Casebolt, David	Salary - Salary	2	160.00	4,384.62
		<b>143 - Casebolt Total:</b>		<b>160.00</b>	<b>4,384.62</b>
156	Montgomery, John	Salary - Salary	1	1.00	500.00
		<b>156 - Montgomery Total:</b>		<b>1.00</b>	<b>500.00</b>
159	Harrison, Nancy	Holiday - Holiday	1	16.00	197.12
		SALARY ENHANCEMENT - SALAR	1	1.00	1,000.00
		Sickleave - Sickleave	2	144.00	1,774.08
		<b>159 - Harrison Total:</b>		<b>161.00</b>	<b>2,971.20</b>
		<b>Mayor - Mayor Total:</b>		<b>322.00</b>	<b>7,855.82</b>

Department: Municipal Court - Municipal Court

129	Raynes, Kristina	Salary - Salary	1	0.00	950.00
		<b>129 - Raynes Total:</b>		<b>0.00</b>	<b>950.00</b>
130	Walters, Richard	Salary - Salary	1	0.00	850.00
		<b>130 - Walters Total:</b>		<b>0.00</b>	<b>850.00</b>
368	Fulks, Amy	Comp Earned - Comp Earned	1	6.00	0.00
		Holiday - Holiday	1	13.00	255.97
		Regular - Regular	2	147.00	2,894.43
		SALARY ENHANCEMENT - SALAR	1	1.00	1,000.00
		<b>368 - Fulks Total:</b>		<b>167.00</b>	<b>4,150.40</b>
		<b>Municipal Court - Municipal Court Total:</b>		<b>167.00</b>	<b>5,950.40</b>

Department: Museum - Museum

Employee Number	Employee Name	Pay Code	# of Payments	Units	Pay Amount
378	Kostelansky, Carmen	Regular - Regular	2	71.50	625.63
			<b>378 - Kostelansky Total:</b>	<b>71.50</b>	<b>625.63</b>
			<b>Museum - Museum Total:</b>	<b>71.50</b>	<b>625.63</b>

Department: Park & Rec - Park & Rec

Employee Number	Employee Name	Pay Code	# of Payments	Units	Pay Amount
739	Caudill, James	Holiday - Holiday	1	16.00	199.04
		Overtime - Overtime	2	16.00	298.56
		Regular - Regular	2	144.00	1,791.36
		SALARY ENHANCEMENT - SALAR	1	1.00	1,000.00
			<b>739 - Caudill Total:</b>	<b>177.00</b>	<b>3,288.96</b>
740	Southall, Cody	Holiday - Holiday	1	8.00	90.56
		Regular - Regular	2	152.00	1,720.64
		SALARY ENHANCEMENT - SALAR	1	1.00	1,000.00
			<b>740 - Southall Total:</b>	<b>161.00</b>	<b>2,811.20</b>
			<b>Park &amp; Rec - Park &amp; Rec Total:</b>	<b>338.00</b>	<b>6,100.16</b>

Department: Police - Police

Employee Number	Employee Name	Pay Code	# of Payments	Units	Pay Amount
369	Buckland-Walsh, Chastity	Regular - Regular	2	3.50	30.63
			<b>369 - Buckland-Walsh Total:</b>	<b>3.50</b>	<b>30.63</b>
401	Eggleton, Robert	Annualleave - Annualleave	1	131.00	4,400.63
		Comp Earned - Comp Earned	1	9.00	0.00
		Comp Taken - Comp Taken	1	278.25	9,347.15
		Hazard Pay - Hazard Pay	1	1.00	1,000.00
		Salary - Salary	2	160.00	5,374.82
		Sickleave - Sickleave	1	24.00	0.00
			<b>401 - Eggleton Total:</b>	<b>603.25</b>	<b>20,122.60</b>
444	Oxley, Brian	Annualleave - Annualleave	1	24.00	654.08
		BuyOutaccumLeav - BuyOutAccu	1	32.00	872.12
		Hazard Pay - Hazard Pay	1	1.00	1,000.00
		Holiday Earned - Holiday Earned	1	18.00	0.00
		HolidayWork - HolidayWork	1	6.00	245.28
		Overtime - Overtime	2	41.00	1,676.10
		Regular - Regular	2	145.00	3,951.79
			<b>444 - Oxley Total:</b>	<b>267.00</b>	<b>8,399.37</b>



448	Whitney, Eric	Hazard Pay - Hazard Pay	1	1.00	1,000.00
		Holiday Earned - Holiday Earned	1	12.00	0.00
		HolidayWork - HolidayWork	1	12.00	427.34
		Overtime - Overtime	2	18.00	641.01
		Regular - Regular	2	140.00	3,323.77
		SickLeave - SickLeave	1	24.00	569.78
		<b>448 - Whitney Total:</b>		<b>207.00</b>	<b>5,961.90</b>
450	Richardson, David	AnnualLeave - AnnualLeave	2	60.00	1,319.10
		Hazard Pay - Hazard Pay	1	1.00	1,000.00
		Holiday Earned - Holiday Earned	1	24.00	0.00
		Overtime - Overtime	2	11.50	379.24
		Regular - Regular	2	80.00	1,758.80
		SickLeave - SickLeave	1	24.00	527.64
		<b>450 - Richardson Total:</b>		<b>200.50</b>	<b>4,984.78</b>
452	Greene, Clark	AnnualLeave - AnnualLeave	1	24.00	615.46
		BuyOutAccumLeav - BuyOutAccu	1	40.00	1,025.78
		Hazard Pay - Hazard Pay	1	1.00	1,000.00
		Holiday Earned - Holiday Earned	1	6.00	0.00
		HolidayWork - HolidayWork	1	18.00	692.40
		Overtime - Overtime	1	14.00	538.53
		Regular - Regular	2	146.00	3,744.08
		<b>452 - Greene Total:</b>		<b>249.00</b>	<b>7,616.25</b>
458	Fleming, Christopher	AnnualLeave - AnnualLeave	1	8.00	201.59
		Hazard Pay - Hazard Pay	1	1.00	1,000.00
		Holiday Earned - Holiday Earned	1	24.00	0.00
		Overtime - Overtime	2	22.00	831.57
		Regular - Regular	2	153.00	3,855.47
		<b>458 - Fleming Total:</b>		<b>208.00</b>	<b>5,888.63</b>
463	Garbin, Jason	AnnualLeave - AnnualLeave	1	18.00	458.95
		BuyOutAccumLeav - BuyOutAccu	1	40.00	1,019.90
		Hazard Pay - Hazard Pay	1	1.00	1,000.00
		Holiday Earned - Holiday Earned	1	12.00	0.00
		HolidayWork - HolidayWork	1	8.00	305.97
		Overtime - Overtime	2	72.00	2,753.73
		Regular - Regular	2	160.00	4,079.60
		<b>463 - Garbin Total:</b>		<b>311.00</b>	<b>9,618.15</b>
465	Blake II, Howard	AnnualLeave - AnnualLeave	1	16.00	361.12
		Hazard Pay - Hazard Pay	1	1.00	1,000.00
		Holiday Earned - Holiday Earned	1	12.00	0.00
		HolidayWork - HolidayWork	1	12.00	406.27
		Overtime - Overtime	2	11.00	372.41
		Regular - Regular	2	144.00	3,250.15
		<b>465 - Blake II Total:</b>		<b>196.00</b>	<b>5,389.95</b>

471	Raynes, Justin	Annualleave - Annualleave	1	8.00	194.61
		Hazard Pay - Hazard Pay	1	1.00	1,000.00
		Holiday Earned - Holiday Earned	1	12.00	0.00
		HolidayWork - HolidayWork	1	10.00	364.90
		Overtime - Overtime	2	64.00	2,335.37
		Regular - Regular	2	160.00	3,892.28
		<b>471 - Raynes Total:</b>		<b>255.00</b>	<b>7,787.16</b>
474	Clay, Mikel	Annualleave - Annualleave	1	28.00	553.21
		Hazard Pay - Hazard Pay	1	1.00	1,000.00
		Holiday Earned - Holiday Earned	1	24.00	0.00
		Overtime - Overtime	2	18.00	533.44
		Regular - Regular	2	132.00	2,607.91
		<b>474 - Clay Total:</b>		<b>203.00</b>	<b>4,694.56</b>
475	Hastings, Christopher	Hazard Pay - Hazard Pay	1	1.00	1,000.00
		Holiday Earned - Holiday Earned	1	6.00	0.00
		HolidayWork - HolidayWork	1	18.00	608.51
		Overtime - Overtime	2	30.00	1,014.19
		Regular - Regular	2	156.00	3,515.85
		<b>475 - Hastings Total:</b>		<b>211.00</b>	<b>6,138.55</b>
476	Farry, Joseph	Annualleave - Annualleave	2	36.00	714.78
		Hazard Pay - Hazard Pay	1	1.00	1,000.00
		Holiday Earned - Holiday Earned	1	18.00	0.00
		HolidayWork - HolidayWork	1	6.00	178.69
		Overtime - Overtime	2	12.00	357.39
		Regular - Regular	2	128.00	2,541.39
		<b>476 - Farry Total:</b>		<b>201.00</b>	<b>4,792.25</b>
478	Owens, Phillip	Hazard Pay - Hazard Pay	1	1.00	1,000.00
		Holiday Earned - Holiday Earned	1	24.00	0.00
		Overtime - Overtime	2	16.00	463.62
		Regular - Regular	2	152.00	2,936.30
		<b>478 - Owens Total:</b>		<b>193.00</b>	<b>4,399.92</b>
479	Reekie, Scott	Hazard Pay - Hazard Pay	1	1.00	1,000.00
		Holiday Earned - Holiday Earned	1	18.00	0.00
		HolidayWork - HolidayWork	1	6.00	200.20
		Overtime - Overtime	2	29.00	967.64
		Regular - Regular	2	160.00	3,559.14
		Training Regular - Training Reguli	1	8.00	177.96
		<b>479 - Reekie Total:</b>		<b>222.00</b>	<b>5,904.94</b>

480	Haynes, Matthew	Hazard Pay - Hazard Pay	1	1.00	1,000.00
		Holiday Earned - Holiday Earned	1	12.00	0.00
		HolidayWork - HolidayWork	1	12.00	342.45
		Overtime - Overtime	2	36.00	1,027.35
		Regular - Regular	2	160.00	3,044.00
		<b>480 - Haynes Total:</b>		<b>221.00</b>	<b>5,413.80</b>
481	Ferrell, Justin	Annualleave - Annualleave	1	24.00	449.58
		Hazard Pay - Hazard Pay	1	1.00	1,000.00
		Holiday Earned - Holiday Earned	1	12.00	0.00
		HolidayWork - HolidayWork	1	12.00	337.19
		Overtime - Overtime	2	20.00	561.98
		Regular - Regular	2	140.00	2,622.57
		<b>481 - Ferrell Total:</b>		<b>209.00</b>	<b>4,971.32</b>
482	Bogess, Benjamin	Annualleave - Annualleave	2	16.00	299.72
		Hazard Pay - Hazard Pay	1	1.00	1,000.00
		Holiday Earned - Holiday Earned	1	24.00	0.00
		Overtime - Overtime	2	25.00	702.48
		Regular - Regular	2	142.00	2,660.04
		<b>482 - Bogess Total:</b>		<b>208.00</b>	<b>4,662.24</b>
483	Gullion, Christopher	Hazard Pay - Hazard Pay	1	1.00	1,000.00
		Holiday Earned - Holiday Earned	1	12.00	0.00
		HolidayWork - HolidayWork	1	12.00	337.19
		Overtime - Overtime	2	16.00	449.58
		Regular - Regular	2	152.00	2,847.36
		<b>483 - Gullion Total:</b>		<b>193.00</b>	<b>4,634.13</b>
484	Fortier, Michael	Annualleave - Annualleave	1	36.00	632.22
		Hazard Pay - Hazard Pay	1	1.00	1,000.00
		Holiday Earned - Holiday Earned	1	24.00	0.00
		Overtime - Overtime	2	45.00	1,185.40
		Regular - Regular	2	108.00	1,896.64
		Special Events - Special Events - I	1	4.00	70.25
		Training Regular - Training Regul	1	8.00	140.49
		<b>484 - Fortier Total:</b>		<b>226.00</b>	<b>4,925.00</b>
486	Creighton, Anthony	Hazard Pay - Hazard Pay	1	1.00	1,000.00
		Holiday - Holiday	1	12.00	210.74
		Holiday Earned - Holiday Earned	1	12.00	0.00
		HolidayWork - HolidayWork	1	12.00	316.11
		Overtime - Overtime	2	23.00	605.87
		Regular - Regular	2	140.00	2,458.60
		<b>486 - Creighton Total:</b>		<b>200.00</b>	<b>4,591.32</b>
		<b>Police - Police Total:</b>		<b>4,787.25</b>	<b>130,927.45</b>



Department: Police (34%) Fire (3 - Police (34%) Fire (33%)(Garbage(33%))

Employee Number	Employee Name	Pay Code	# of Payments	Units	Pay Amount
701	Williams, Kevin	Holiday - Holiday	1	16.00	368.48
		Regular - Regular	2	144.00	3,316.32
		SALARY ENHANCEMENT - SALAR	1	1.00	1,000.00
		<b>701 - Williams Total:</b>		<b>161.00</b>	<b>4,684.80</b>
754	Fields, Nicholas	Holiday - Holiday	1	16.00	273.28
		Regular - Regular	2	144.00	2,459.52
		SALARY ENHANCEMENT - SALAR	1	1.00	1,000.00
	<b>754 - Fields Total:</b>		<b>161.00</b>	<b>3,732.80</b>	
<b>Police (34%) Fire (3 - Police (34%) Fire (33%)(Garbage(33%)) Total:</b>				<b>322.00</b>	<b>8,417.60</b>

Department: Police Admin. - Police Admin.

Employee Number	Employee Name	Pay Code	# of Payments	Units	Pay Amount
375	Gaddy, Deanna	Holiday - Holiday	1	16.00	192.00
		Overtime - Overtime	2	6.00	108.00
		Regular - Regular	2	144.00	1,728.00
		SALARY ENHANCEMENT - SALAR	1	1.00	1,000.00
		<b>375 - Gaddy Total:</b>		<b>167.00</b>	<b>3,028.00</b>
<b>Police Admin. - Police Admin. Total:</b>				<b>167.00</b>	<b>3,028.00</b>

Department: Public Works - Public Works

Employee Number	Employee Name	Pay Code	# of Payments	Units	Pay Amount
600	Hill, Alex	Regular - Regular	2	120.00	0.00
		Salary - Salary	2	160.00	4,401.60
		SALARY ENHANCEMENT - SALAR	1	1.00	1,000.00
		Vacation - Vacation	1	40.00	0.00
		<b>600 - Hill Total:</b>		<b>321.00</b>	<b>5,401.60</b>
703	Easter, Jr., Richard	CouncilRaise - CouncilRaise	2	0.00	38.46
		Holiday - Holiday	1	16.00	265.28
		Regular - Regular	2	120.00	1,989.60
		SALARY ENHANCEMENT - SALAR	1	1.00	1,000.00
		Vacation - Vacation	1	24.00	397.92
	<b>703 - Easter, Jr. Total:</b>		<b>161.00</b>	<b>3,691.26</b>	
713	Jones, Joseph	CouncilRaise - CouncilRaise	2	0.00	38.46
		Holiday - Holiday	1	16.00	220.32
		Regular - Regular	2	144.00	1,982.88
		SALARY ENHANCEMENT - SALAR	1	1.00	1,000.00
		VacatBuyOut - VacatBuyOut	1	40.00	550.80
	<b>713 - Jones Total:</b>		<b>201.00</b>	<b>3,792.46</b>	

731	Scarberry, Robert	Holiday - Holiday	1	16.00	182.40
		Regular - Regular	2	144.00	1,641.60
		SALARY ENHANCEMENT - SALAR	1	1.00	1,000.00
		<b>731 - Scarberry Total:</b>		<b>161.00</b>	<b>2,824.00</b>
		<b>Public Works - Public Works Total:</b>		<b>844.00</b>	<b>15,709.32</b>

**Department: Recorder - Recorder**

142	Cox, Mary	Salary - Salary	2	160.00	2,846.16
		<b>142 - Cox Total:</b>		<b>160.00</b>	<b>2,846.16</b>
		<b>Recorder - Recorder Total:</b>		<b>160.00</b>	<b>2,846.16</b>

**Department: Seniors - Seniors**

289	Wright, Becky	Holiday - Holiday	1	16.00	154.40
		Regular - Regular	2	144.00	1,389.60
		SALARY ENHANCEMENT - SALAR	1	1.00	1,000.00
		<b>289 - Wright Total:</b>		<b>161.00</b>	<b>2,544.00</b>
		<b>Seniors - Seniors Total:</b>		<b>161.00</b>	<b>2,544.00</b>

**Department: Streets & Hwys - Streets & Hwys**

667	Jones, Jason	CouncilRaise - CouncilRaise	2	0.00	38.46
		Holiday - Holiday	1	16.00	269.60
		Regular - Regular	2	144.00	2,426.40
		SALARY ENHANCEMENT - SALAR	1	1.00	1,000.00
		<b>667 - Jones Total:</b>		<b>161.00</b>	<b>3,734.46</b>
724	Lucas, Kenneth	Holiday - Holiday	1	16.00	204.00
		Regular - Regular	2	104.00	1,326.00
		SALARY ENHANCEMENT - SALAR	1	1.00	1,000.00
		Vacation - Vacation	1	40.00	510.00
		<b>724 - Lucas Total:</b>		<b>161.00</b>	<b>3,040.00</b>
741	Lacy, Dale	Holiday - Holiday	1	16.00	170.88
		Regular - Regular	2	144.00	1,537.92
		SALARY ENHANCEMENT - SALAR	1	1.00	1,000.00
		<b>741 - Lacy Total:</b>		<b>161.00</b>	<b>2,708.80</b>

748	Scarberry, Troy	Holiday - Holiday	1	16.00	170.88
		Regular - Regular	2	136.00	1,452.48
		SALARY ENHANCEMENT - SALAR	1	1.00	1,000.00
		Sickleave - Sickleave	1	8.00	85.44
		<b>748 - Scarberry Total:</b>		<b>161.00</b>	<b>2,708.80</b>
750	Quillen, Christopher	Holiday - Holiday	1	16.00	173.92
		Regular - Regular	2	144.00	1,565.28
		SALARY ENHANCEMENT - SALAR	1	1.00	1,000.00
		<b>750 - Quillen Total:</b>		<b>161.00</b>	<b>2,739.20</b>
751	Williams, Joshua	Holiday - Holiday	1	16.00	162.24
		Regular - Regular	2	120.00	1,216.80
		SALARY ENHANCEMENT - SALAR	1	1.00	1,000.00
		Sickleave - Sickleave	2	24.00	243.36
		<b>751 - Williams Total:</b>		<b>161.00</b>	<b>2,622.40</b>
752	Barke, Mark	Holiday - Holiday	1	16.00	162.24
		Regular - Regular	2	120.00	1,216.80
		SALARY ENHANCEMENT - SALAR	1	1.00	1,000.00
		Sickleave - Sickleave	2	24.00	243.36
		<b>752 - Barke Total:</b>		<b>161.00</b>	<b>2,622.40</b>
		<b>Streets &amp; Hwys - Streets &amp; Hwys Total:</b>		<b>1,127.00</b>	<b>20,176.06</b>

Department: Treasurer - Treasurer

Employee Number	Employee Name	Pay Code	# of Payments	Units	Pay Amount
125	Young, John	Salary - Salary	2	160.00	3,846.16
		SALARY ENHANCEMENT - SALAR	1	1.00	1,000.00
		<b>125 - Young Total:</b>		<b>161.00</b>	<b>4,846.16</b>
		<b>Treasurer - Treasurer Total:</b>		<b>161.00</b>	<b>4,846.16</b>
		<b>Report Total:</b>		<b>15,309.25</b>	<b>344,964.79</b>





Payroll Set: 01-Payroll Set 01

Account	Account Description	Units	Pay Amount
	**BENEFIT AND NON GL TRANSACTIONS**		
	- Total:	703.00	0.00
001-409-101-001	Salaries (Mayor)	160.00	4,384.62
001-409-103-002	Salaries Admin	1.00	1,000.00
001-409-103-003	Salaries Legislative Liaison	1.00	500.00
001-409-103-017	Holiday Admin	16.00	197.12
001-409-103-023	Sick Leave Admin	144.00	1,774.08
001-410-103-001	Salaries (Council)	7.00	3,500.00
001-411-101-001	Salaries (Recorder)	160.00	2,846.16
001-413-103-001	Salaries (Treasurer)	161.00	4,846.16
001-416-103-001	Salaries (Municipal Court)	148.00	3,894.43
001-416-103-017	Holiday	13.00	255.97
001-416-223-132	Professional Svcs - Judge	0.00	850.00
001-416-223-133	Professional Svcs - Prosecutor	0.00	950.00
001-436-103-001	Salaries (Bldg. Dept.)	476.00	12,229.40
001-436-103-006	Overtime	11.00	446.33
001-436-103-017	Holiday	48.00	1,431.12
001-436-103-020	Vacation	8.00	216.40
001-436-103-023	Sick Leave	10.00	106.26
001-436-103-032	Safety Director	0.00	150.00
001-440-103-001	Salaries (City Hall)	260.00	6,887.72
001-440-103-017	Holiday	32.00	600.48
001-440-103-020	Vacation	22.00	378.84
001-440-103-023	Sick Leave	8.00	137.76
001-440-103-026	Buy Out Accum	40.00	812.40
001-440-103-029	Council Raise	0.00	76.92
001-440-103-031	Cleaning	0.00	320.00
001-457-103-001	Salaries (City Planner)	251.00	4,139.20
001-566-103-001	Salaries (Public Works)	974.00	19,112.48
001-566-103-003	Salaries Mechanic	290.00	7,775.84
001-566-103-017	Holiday	112.00	1,663.68
001-566-103-020	Vacation	64.00	397.92
001-566-103-023	Sick Leave	8.00	88.48
001-566-103-026	Buy Out Accum	40.00	550.80
001-566-103-029	Council Raise	0.00	76.92
001-700-103-001	Salaries (Police)	3,156.25	93,267.71
001-700-103-002	Salaries Administrative	145.00	2,728.00
001-700-103-004	Salaries Crossing Guard	3.50	30.63

Account	Account Description	Units	Pay Amount
001-700-103-006	Overtime Police	523.50	17,396.90
001-700-103-007	Overtime Administrative	6.00	108.00
001-700-103-014	Holiday Work	144.00	4,762.50
001-700-103-017	Holiday	12.00	210.74
001-700-103-018	Holiday Administrative	16.00	192.00
001-700-103-020	Annual Leave	429.00	10,855.05
001-700-103-023	Sick Leave	72.00	1,097.42
001-700-103-026	Buy Out Accum Police	112.00	2,917.80
001-700-103-031	Cleaning	0.00	400.00
001-700-103-041	Training Regular	16.00	318.45
001-700-103-042	Special Events	4.00	70.25
001-706-103-001	Salaries (Fire)	2,260.00	49,903.12
001-706-103-006	Overtime Unscheduled	290.00	7,554.33
001-706-103-011	Overtime Training	2.00	42.81
001-706-103-012	Overtime Call Out	28.00	732.54
001-706-103-014	Holiday Work	165.50	6,444.11
001-706-103-020	Annual Leave	72.00	1,118.88
001-706-103-023	Sick Leave	84.00	1,364.28
001-706-103-034	Step Up Pay	120.00	2,191.20
001-706-345-164	Uniforms	0.00	269.20
001-707-103-006	Overtime	16.00	298.56
001-750-103-001	Salaries (Streets & Hwys.)	919.00	17,741.68
001-750-103-017	Holiday	112.00	1,313.76
001-750-103-020	Vacation	40.00	510.00
001-750-103-023	Sick Leave	56.00	572.16
001-750-103-029	Council Raise	0.00	38.46
001-800-103-001	Salaries (Garbage & Landfill)	661.00	12,870.64
001-800-103-006	Overtime	14.00	250.95
001-800-103-017	Holiday	80.00	963.04
001-800-103-020	Vacation	64.00	796.72
001-800-103-029	Council Raise	0.00	115.38
001-900-103-001	Salaries (Park & Rec.)	298.00	5,512.00
001-900-103-017	Holiday	24.00	289.60
001-901-103-001	Salaries (CVB)	321.00	3,636.80
001-911-103-001	Salaries (Museum)	71.50	625.63
001-916-103-001	Salaries (Library)	571.00	9,342.24
001-916-103-017	Holiday	48.00	412.32
001-916-103-020	Vacation	16.00	241.76
001-916-103-031	Cleaning	0.00	230.40
001-916-103-043	COVID19 Wages	8.00	85.28
001-951-103-001	Salaries (Seniors)	145.00	2,389.60
001-951-103-017	Holiday	16.00	154.40

001 - GENERAL FUND Total:

14,606.25 344,964.79

Report Total:

15,309.25 344,964.79



Payroll Set: 01-Payroll Set 01

Pay Code	Description	# of Payments	Units	Pay Amount
AnnualLeave - AnnualLeav	AnnualLeave	18	509.00	12,190.33
BuyOutAccumLeav - BuyO	BuyOutAccumLeav	3	112.00	2,917.80
CallOutOT - Call Out OT	Call Out OT	10	28.00	732.54
Cleaning - Cleaning	Cleaning	6	0.00	950.40
Comp Earned - Comp Earr	Comp Earned	4	45.00	0.00
Comp Taken - Comp Taken	Comp Taken	3	294.25	9,347.15
CouncilRaise - CouncilRais	CouncilRaise	16	0.00	307.68
COVID19 - COVID19	COVID19	1	8.00	85.28
Hazard Pay - Hazard Pay	Hazard Pay	41	41.00	41,000.00
Holiday - Holiday	Holiday	33	513.00	6,602.23
Holiday Earned - Holiday E	Holiday Earned	19	306.00	0.00
Holiday Earned FD - Holid	Holiday Earned FD	10	352.00	0.00
Holiday FD8 - Holiday FD8	Holiday FD8	2	32.00	2,401.20
Holiday Taken FD - Holid	Holiday Taken FD	8	276.00	4,698.36
Holiday Work FD8 - Holid	Holiday Work FD8	1	21.50	2,035.51
HolidayWork - HolidayWo	HolidayWork	20	272.00	7,851.90
Military - Military	Military	1	24.00	620.16
Overtime - Overtime	Overtime	53	860.50	26,055.07
Regular - Regular	Regular	135	9,328.00	145,633.83
SafetyDirector - SafetyDire	SafetyDirector	2	0.00	150.00
Salary - Salary	Salary	28	1,448.00	40,664.56
SALARY ENHANCEMENT - SAL	SALARY ENHANCEMENT	29	29.00	29,000.00
Sickleave - Sickleave	Sickleave	18	382.00	5,140.44
Special Events - Special Ev	Special Events - Regular	1	4.00	70.25
StepUpPay - StepUpPay	StepUpPay	2	120.00	2,191.20
Training Regular - Training	Training Regular	2	16.00	318.45
TrainOT - TrainOT	TrainOT	1	2.00	42.81
UniformsFD - UniformsFD	UniformsFD	1	0.00	269.20
VacatBuyOut - VacatBuyO	VacatBuyOut	2	80.00	1,363.20
Vacation - Vacation	Vacation	7	206.00	2,325.24
<b>Report Total:</b>				<b>344,964.79</b>



CITY OF NITRO, WV

# Check Repc

By Check Nun

Date Range: 12/01/2020 - 12/31/2

Vendor Number	Vendor Name	Payment Date	Payment Type	Discount Amount	Payment Amount	Number
<b>Bank Code: DISB-DISBURSEMENT ACCOUNT</b>						
AMEGEN	AMERICAN GENERAL LIFE INSURANCE COMPAT	12/04/2020	Regular	0.00	64.30	50999
AMEGEN-CH	AMERICAN GENERAL LIFFE	12/04/2020	Regular	0.00	385.54	51000
ANCSUP	ANCHOR SUPPLY CO., INC	12/04/2020	Regular	0.00	1,039.40	51001
ATTMOB	AT&T MOBILITY	12/04/2020	Regular	0.00	45.00	51002
BOGGS	BOGGS & ASSOCIATES, INC.	12/04/2020	Regular	0.00	600.00	51003
BRIYOU	BRIAN YOUNG/YOUNG AND ASSOCIATES CPAS	12/04/2020	Regular	0.00	675.00	51004
CENHAR	CENTER HARDWARE	12/04/2020	Regular	0.00	717.16	51005
CINTAS	CINTAS CORPORATION	12/04/2020	Regular	0.00	99.00	51006
CLAFRU	CLARK FRUIT & VEGETABLE FARM	12/04/2020	Regular	0.00	938.00	51007
CUMCRO	CUMMINGS CROSS POINT	12/04/2020	Regular	0.00	770.00	51008
DANDAW	DANNY DAWSON	12/04/2020	Regular	0.00	2,115.00	51009
DAVSMI	DAVID SMITH FRAME & BODY SHOP INC.	12/04/2020	Regular	0.00	1,657.65	51010
ENCOVA	ENCOVA	12/04/2020	Regular	0.00	5,844.00	51011
FIDEL-FIRE-CC	FIREMENS PENSION FUND	12/04/2020	Regular	0.00	4,510.56	51012
FROCOMM	FRONTIER	12/04/2020	Regular	0.00	300.00	51013
HDMEDIA	H-D MEDIA COMPANY, LLC	12/04/2020	Regular	0.00	35.25	51014
WAGWORKS	HEALTHQUITY	12/04/2020	Regular	0.00	291.75	51015
HOLDES	HOLIDAY DESIGNS, INC.	12/04/2020	Regular	0.00	4,472.83	51016
LOWES PR	LOWES	12/04/2020	Regular	0.00	119.16	51017
LOWES	LOWES	12/04/2020	Regular	0.00	516.29	51018
MARMAR	MARTIN MARRIETA	12/04/2020	Regular	0.00	786.64	51019
NAPA	NAPA AUTO PARTS	12/04/2020	Regular	0.00	2,268.00	51020
NITHOB	NITRO HOBBY & CRAFT CENTER LLC	12/04/2020	Regular	0.00	37.96	51021
NITREG	NITRO REGIONAL WASTE	12/04/2020	Regular	0.00	460.76	51022
FIDEL-PD-CC	POLICEMEN'S PENSION FUND	12/04/2020	Regular	0.00	4,841.56	51023
PROCHE	PRO CHEM, INC.	12/04/2020	Regular	0.00	1,874.04	51024
QUILL	QUILL	12/04/2020	Regular	0.00	153.66	51025
UNIFIRST	UNIFIRST CORPORATION	12/04/2020	Regular	0.00	1,802.27	51026
VANCE'S	VANCE'S LAW ENFORCEMENT	12/04/2020	Regular	0.00	3,294.13	51027
WESBRA	WESTERN BRANCH DIESEL, INC	12/04/2020	Regular	0.00	13,456.78	51028
WVAMER	WV AMERICAN WATER	12/04/2020	Regular	0.00	338.29	51029
WV ASSOC	WV ASSOCIATION OF COUNTIES	12/04/2020	Regular	0.00	2,596.00	51030
AFLAC	AFLAC	12/11/2020	Regular	0.00	738.06	51031
AFLAC-CH	AFLAC	12/11/2020	Regular	0.00	33.16	51032
APPOW	APPALACHIAN POWER	12/11/2020	Regular	0.00	7,481.30	51033
CADAM	C ADAM TONEY	12/11/2020	Regular	0.00	1,858.92	51034
CAPCIT	CAPITOL CITY LODGE #74	12/11/2020	Regular	0.00	297.72	51035
DAVSMI	DAVID SMITH FRAME & BODY SHOP INC.	12/11/2020	Regular	0.00	2,374.30	51036
DEEGAD	DEE GADDY	12/11/2020	Regular	0.00	178.94	51037
FIDEL-FIRE-CC	FIREMENS PENSION FUND	12/11/2020	Regular	0.00	4,510.56	51038
HOTSY	HOTSY EQUIPMENT COMPANY	12/11/2020	Regular	0.00	6,849.00	51039
JASCOB	JASON COBB	12/11/2020	Regular	0.00	1,300.00	51040
KANCLE	KANAWHA COUNTY CLERK	12/11/2020	Regular	0.00	11.00	51041
LAUCOX	LAURA LEE COX	12/11/2020	Regular	0.00	7,240.00	51042
LEONARD	LEONARDS ELECTRICAL SUPPLIES	12/11/2020	Regular	0.00	300.00	51043
FIDEL-FIRE	NITRO FIREMEN'S PENSION FUND	12/11/2020	Regular	0.00	4,174.02	51044
FIDEL-POLICE	POLICEMEN'S PENSION FUND	12/11/2020	Regular	0.00	5,948.46	51045
FIDEL-PD-CC	POLICEMEN'S PENSION FUND	12/11/2020	Regular	0.00	4,841.56	51046
PUTCLE	PUTNAM COUNTY CLERK	12/11/2020	Regular	0.00	22.00	51047
RABER	RABER LAW OFFICES, PLLC	12/11/2020	Regular	0.00	5,774.00	51048
RIVVAL	RIVER VALLEY HOLDINGS, LLC	12/11/2020	Regular	0.00	75.00	51049
STAELE	STATE ELECTRIC SUPPLY CO.	12/11/2020	Regular	0.00	61.60	51050
STRMED	STRYKER MEDICAL	12/11/2020	Regular	0.00	1,482.70	51051
WILCO	WILCO LIFE INSURANCE CO	12/11/2020	Regular	0.00	21.68	51052



Check Report

Date Range: 12/01/2020 - 12/31/2020

Vendor Number	Vendor Name	Payment Date	Payment Type	Discount Amount	Payment Amount	Number
INDAW	DANNY DAWSON	12/17/2020	Regular	0.00	625.00	51053
DEL-FIRE-CC	FIREMENS PENSION FUND	12/17/2020	Regular	0.00	4,510.56	51054
MCOT	KIM COTTRELL	12/17/2020	Regular	0.00	500.00	51055
DEL-PD-CC	POLICEMEN'S PENSION FUND	12/17/2020	Regular	0.00	4,841.56	51056
DEGAD	DEE GADDY	12/18/2020	Regular	0.00	337.37	51057
KNCLE	KANAWHA COUNTY CLERK	12/21/2020	Regular	0.00	308.00	51058
POST	POSTMASTER	12/21/2020	Regular	0.00	1,369.26	51059
KNJCLE	PUTNAM COUNTY CLERK	12/21/2020	Regular	0.00	22.00	51060
APCIT	CAPITOL CITY LODGE #74	12/28/2020	Regular	0.00	297.72	51061
COLLIF	COLONIAL LIFE INSURANCE	12/28/2020	Regular	0.00	168.06	51062
ATMAX	DATA MAX	12/28/2020	Regular	0.00	3,095.15	51063
RIFAM	ERIE FAMILY LIFE INS	12/28/2020	Regular	0.00	12.00	51064
FTHI	FIFTH THIRD BANK	12/28/2020	Regular	0.00	53,382.15	51065
	**Void**	12/28/2020	Regular	0.00	0.00	51066
	**Void**	12/28/2020	Regular	0.00	0.00	51067
IDEL-FIRE-CC	FIREMENS PENSION FUND	12/28/2020	Regular	0.00	4,510.56	51068
OMBIN	LISTBILL COMBINED INSURANCE	12/28/2020	Regular	0.00	860.32	51069
MAGNATAG	MAGNATAG INC.	12/28/2020	Regular	0.00	194.10	51070
IDEL-FIRE	NITRO FIREMEN'S PENSION FUND	12/28/2020	Regular	0.00	2,436.05	51071
IITHOB	NITRO HOBBY & CRAFT CENTER LLC	12/28/2020	Regular	0.00	66.47	51072
IITREG	NITRO REGIONAL WASTE	12/28/2020	Regular	0.00	1,580.26	51073
PEOWOR	PEOPLE WORKS SOLUTIONS	12/28/2020	Regular	0.00	1,707.50	51074
IDEL-PD-CC	POLICEMEN'S PENSION FUND	12/28/2020	Regular	0.00	4,841.56	51075
IDEL-POLICE	POLICEMEN'S PENSION FUND	12/28/2020	Regular	0.00	3,946.61	51076
RABER	RABER LAW OFFICES, PLLC	12/28/2020	Regular	0.00	1,000.05	51077
SECINC	SESAC INC	12/28/2020	Regular	0.00	483.00	51078
STATASER	STATEWIDE SERVICE	12/28/2020	Regular	0.00	308.16	51079
WASNAT	WASHINGTON NATIONAL INS CO.	12/28/2020	Regular	0.00	159.76	51080
BRIYOU	BRIAN YOUNG/YOUNG AND ASSOCIATES CPAs	12/29/2020	Regular	0.00	1,000.00	51081
IRS	INTERNAL REVENUE SERVICES	12/29/2020	Regular	0.00	10,438.81	51082
KANVAL	KANAWHA VALLEY REG TRAN	12/29/2020	Regular	0.00	5,465.02	51083
TRAVLERS	TRAVELERS	12/29/2020	Regular	0.00	21,849.81	51084
WESVIRRET	WV PUBLIC EMPLOYEES RETIREMENT SYSTEM	12/10/2020	Bank Draft	0.00	4,245.23	DFT0002927
WESVIRRET	WV PUBLIC EMPLOYEES RETIREMENT SYSTEM	12/10/2020	Bank Draft	0.00	2,930.97	DFT0002928
WESVIRTAX	WEST VIRGINIA STATE TAX DEPT.	12/15/2020	Bank Draft	0.00	5,227.00	DFT0002934
WESVIRTAX	WEST VIRGINIA STATE TAX DEPT.	12/15/2020	Bank Draft	0.00	43.00	DFT0002952
WESVIRRET	WV PUBLIC EMPLOYEES RETIREMENT SYSTEM	12/10/2020	Bank Draft	0.00	4,346.85	DFT0002959
WESVIRRET	WV PUBLIC EMPLOYEES RETIREMENT SYSTEM	12/10/2020	Bank Draft	0.00	2,923.93	DFT0002960
WESVIRTAX	WEST VIRGINIA STATE TAX DEPT.	12/15/2020	Bank Draft	0.00	5,569.00	DFT0002966
WESVIRRET	WV PUBLIC EMPLOYEES RETIREMENT SYSTEM	12/10/2020	Bank Draft	0.00	16.66	DFT0002968
WESVIRRET	WV PUBLIC EMPLOYEES RETIREMENT SYSTEM	12/10/2020	Bank Draft	0.00	68.22	DFT0002969
WESVIRTAX	WEST VIRGINIA STATE TAX DEPT.	12/15/2020	Bank Draft	0.00	14.00	DFT0002972
PITBOWPOST	PURCHASE POWER	12/14/2020	Bank Draft	0.00	781.72	DFT0002973
RETHEA	RETIREE HEALTH BENEFIT TRUST FUND	12/05/2020	Bank Draft	0.00	15,828.70	DFT0002974
WVPEIA	WV PEIA	12/05/2020	Bank Draft	0.00	39,687.64	DFT0002975
HUNBAN	HUNTINGTON BANKS	12/07/2020	Bank Draft	0.00	-9.75	DFT0002976
HUNBAN	HUNTINGTON BANKS	12/07/2020	Bank Draft	0.00	-7.80	DFT0002977
HUNBAN	HUNTINGTON BANKS	12/07/2020	Bank Draft	0.00	-33.38	DFT0002978
HUNBAN	HUNTINGTON BANKS	12/07/2020	Bank Draft	0.00	9.75	DFT0002980
HUNBAN	HUNTINGTON BANKS	12/07/2020	Bank Draft	0.00	7.80	DFT0002981
HUNBAN	HUNTINGTON BANKS	12/07/2020	Bank Draft	0.00	33.38	DFT0002982
WVTRE	WEST VIRGINIA STATE TREASURER'S OFFICE	12/04/2020	Bank Draft	0.00	298.00	DFT0002984
HUNBAN	HUNTINGTON BANKS	12/13/2020	Bank Draft	0.00	1.24	DFT0002987
HUNBAN	HUNTINGTON BANKS	12/13/2020	Bank Draft	0.00	5.29	DFT0002988
DEPHEA	DEPT OF HEALTH & HUMAN RESOURCES	12/10/2020	Bank Draft	0.00	247.80	DFT0003003
EMPOWER	EMPOWER RETIREMENT	12/10/2020	Bank Draft	0.00	160.00	DFT0003006
EMPOWER	EMPOWER RETIREMENT	12/10/2020	Bank Draft	0.00	655.00	DFT0003007
HUNBAN	HUNTINGTON BANKS	12/13/2020	Bank Draft	0.00	11,168.76	DFT0003008
HUNBAN	HUNTINGTON BANKS	12/13/2020	Bank Draft	0.00	3,886.30	DFT0003009
HUNBAN	HUNTINGTON BANKS	12/13/2020	Bank Draft	0.00	16,617.08	DFT0003010
HUNBAN	HUNTINGTON BANKS	12/13/2020	Bank Draft	0.00	4,513.78	DFT0003012

Check Report

Date Range: 12/01/2020 - 12/31/20

Vendor Number	Vendor Name	Payment Date	Payment Type	Discount Amount	Payment Amount	Number
Bank Code: HOTEL-HOTEL/MOTEL ACCOUNT INDLAK	INDIAN LAKE	12/17/2020	Regular	0.00	1,000.00	1700

Bank Code HOTEL Summary

Payment Type	Payable Count	Payment Count	Discount	Payment
Regular Checks	1	1	0.00	1,000.00
Manual Checks	0	0	0.00	0.00
Voided Checks	0	0	0.00	0.00
Bank Drafts	0	0	0.00	0.00
EFT's	0	0	0.00	0.00
	<b>1</b>	<b>1</b>	<b>0.00</b>	<b>1,000.00</b>

Check Report

Date Range: 12/01/2020 - 12/31/2020

Vendor Number	Vendor Name	Payment Date	Payment Type	Discount Amount	Payment Amount	Number
Bank Code: LIBRARY-LIBRARY ACCOUNT						
INTAS	CINTAS CORPORATION	12/04/2020	Regular	0.00	623.20	1143

Bank Code LIBRARY Summary

Payment Type	Payable Count	Payment Count	Discount	Payment
Regular Checks	5	1	0.00	623.20
Manual Checks	0	0	0.00	0.00
Voided Checks	0	0	0.00	0.00
Bank Drafts	0	0	0.00	0.00
EFT's	0	0	0.00	0.00
	<b>5</b>	<b>1</b>	<b>0.00</b>	<b>623.20</b>

Check Report

Date Range: 12/01/2020 - 12/31/20

Vendor Number	Vendor Name	Payment Date	Payment Type	Discount Amount	Payment Amount	Number
<b>Bank Code: PAYROLL-PAYROLL ACCOUNT</b>						
JEFELK-SP	NITRO FIREFIGHTERS LOCAL 1822	12/10/2020	Bank Draft	0.00	22.00	DFT000300
JEFELK-UNION	NITRO FIREFIGHTERS LOCAL 1822	12/10/2020	Bank Draft	0.00	198.00	DFT000300
JEFELK-SP	NITRO FIREFIGHTERS LOCAL 1822	12/23/2020	Bank Draft	0.00	22.00	DFT000300
JEFELK-UNION	NITRO FIREFIGHTERS LOCAL 1822	12/23/2020	Bank Draft	0.00	198.00	DFT000300

Bank Code PAYROLL Summary

Payment Type	Payable Count	Payment Count	Discount	Payment
Regular Checks	0	0	0.00	0.00
Manual Checks	0	0	0.00	0.00
Voided Checks	0	0	0.00	0.00
Bank Drafts	4	4	0.00	440.00
EFT's	0	0	0.00	0.00
	<b>4</b>	<b>4</b>	<b>0.00</b>	<b>440.00</b>



Check Report

Date Range: 12/01/2020 - 12/31/2020

Vendor Number	Vendor Name	Payment Date	Payment Type	Discount Amount	Payment Amount	Number
Bank Code: THF ACCT-THF ACCOUNT						
SGLAN	RSG LANDSCAPING & LAWN CARE, INC.	12/04/2020	Regular	0.00	17,064.01	1048

Bank Code THF ACCT Summary

Payment Type	Payable Count	Payment Count	Discount	Payment
Regular Checks	1	1	0.00	17,064.01
Manual Checks	0	0	0.00	0.00
Voided Checks	0	0	0.00	0.00
Bank Drafts	0	0	0.00	0.00
EFT's	0	0	0.00	0.00
	<b>1</b>	<b>1</b>	<b>0.00</b>	<b>17,064.01</b>

### All Bank Codes Check Summary

Payment Type	Payable Count	Payment Count	Discount	Payment
Regular Checks	202	88	0.00	327,024.04
Manual Checks	0	0	0.00	0.00
Voided Checks	0	2	0.00	0.00
Bank Drafts	49	49	0.00	200,083.64
EFT's	0	0	0.00	0.00
	<b>251</b>	<b>139</b>	<b>0.00</b>	<b>527,107.68</b>

### Fund Summary

Fund	Name	Period	Amount
001	GENERAL FUND	12/2020	527,107.68
			<b>527,107.68</b>